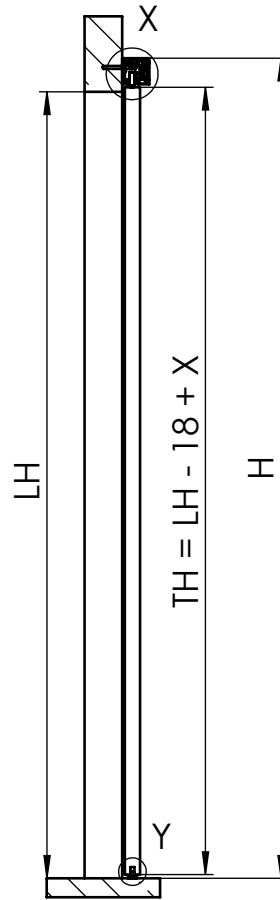
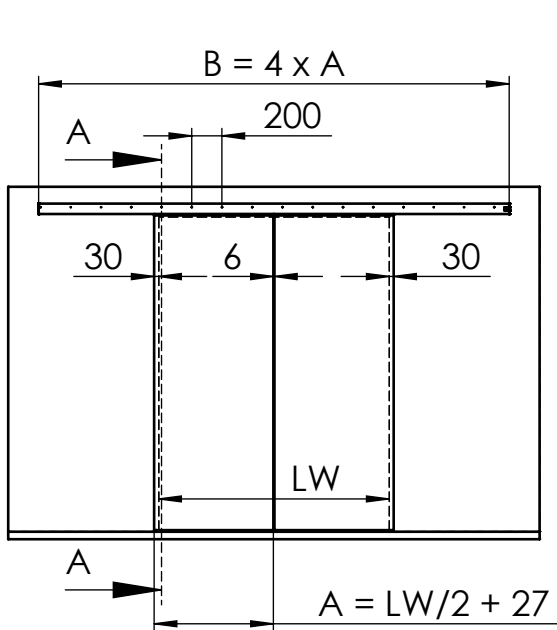
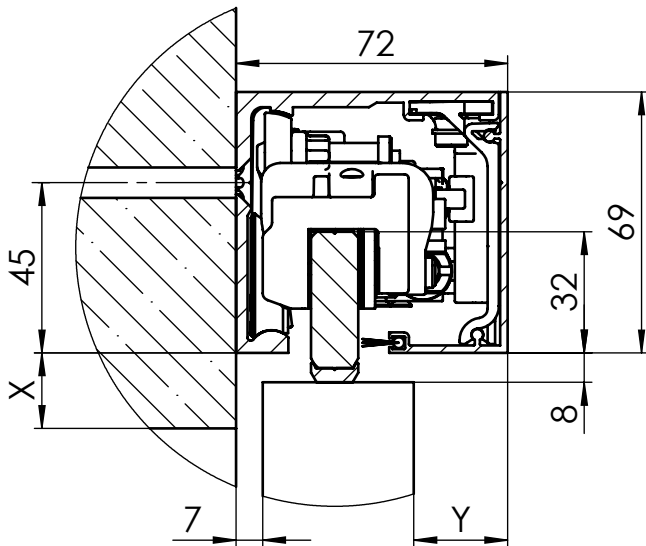


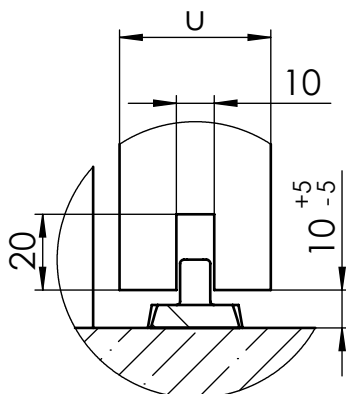
# MUTO Comfort XL DORMOTION 80 2-flügelig Holzanwendung Wandmontage



max. Flügelbreite:	2x1470mm
min. Flügelbreite:	810mm
max. Flügelhöhe:	3000mm
max. Flügelgewicht:	80 kg
Holzstärke:	max. 50mm
DORMOTION	Ja
getestet nach DIN EN 1527	

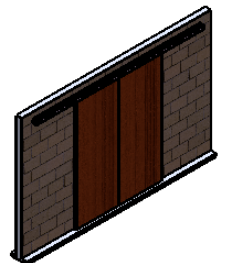


Detail X (1 : 2)

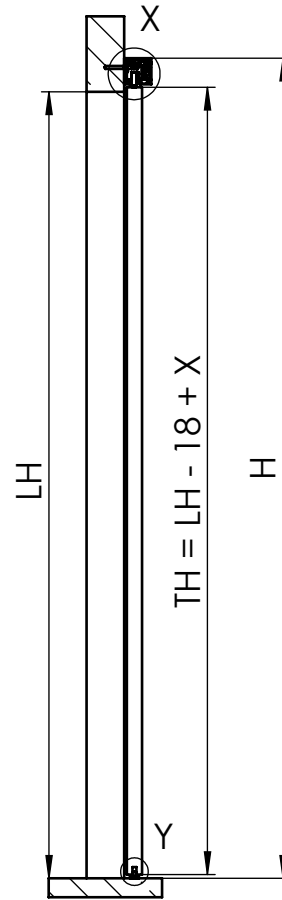
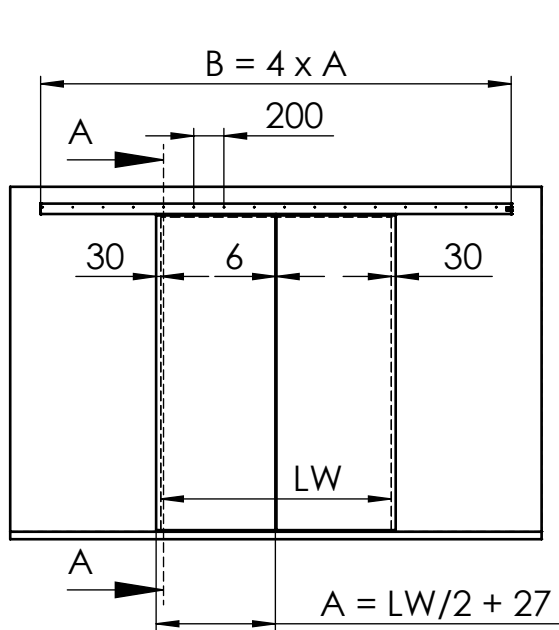


Detail Y (1 : 2)

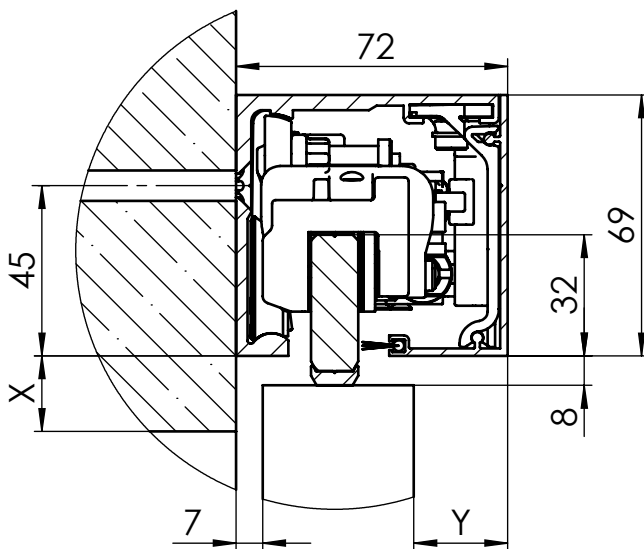
A	Flügelbreite
B	Laufschiene
TH	Türhöhe
H	Gesamthöhe
LH	lichte Höhe
LW	lichte Weite
Y	72 - 7 - u
X	Überstand
u	Holzdicke



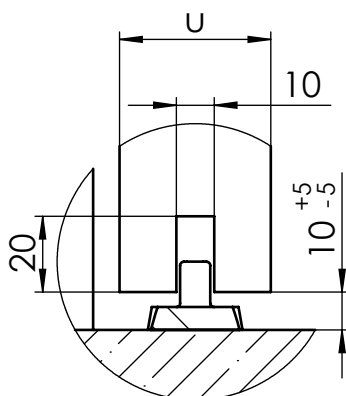
# MUTO Comfort XL DORMOTION 80 two timber door panels fixed at Wall



max. Door width:	2X1470mm
min. Door width:	810mm
max. Door height:	3000mm
max. Door weight :	80 kg
max. thickness of timber:	max. 50mm
DORMOTION subsequent	yes
performed to DIN EN 1527	

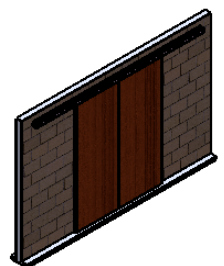


Detail X (1 : 2)

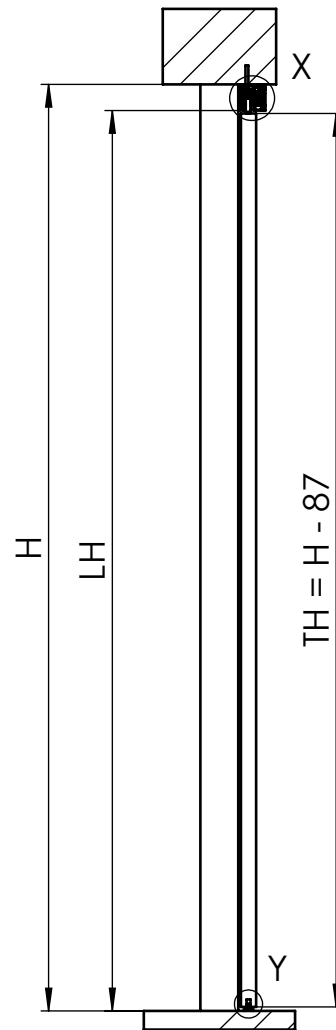
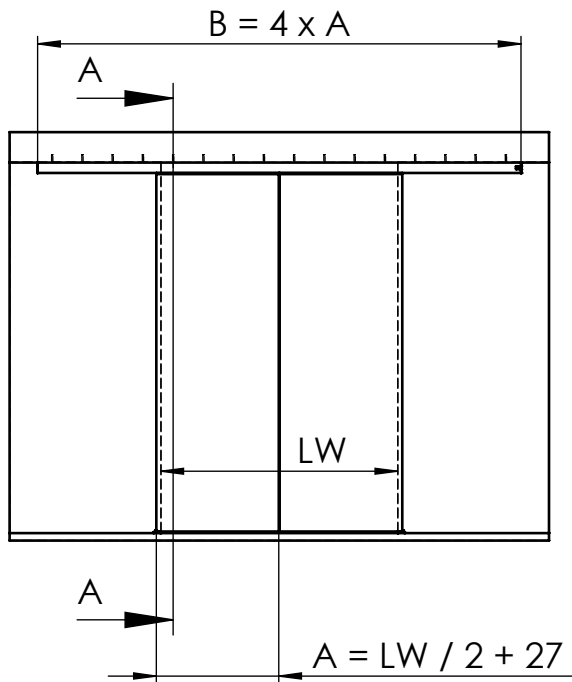


Detail Y (1 : 2)

A	Glass width
B	length of track
TH	Door height
H	total height
LH	clear opening height
LW	clear opening width
u	thickness of timber
X	protrusion
Y	72 - 7 - u

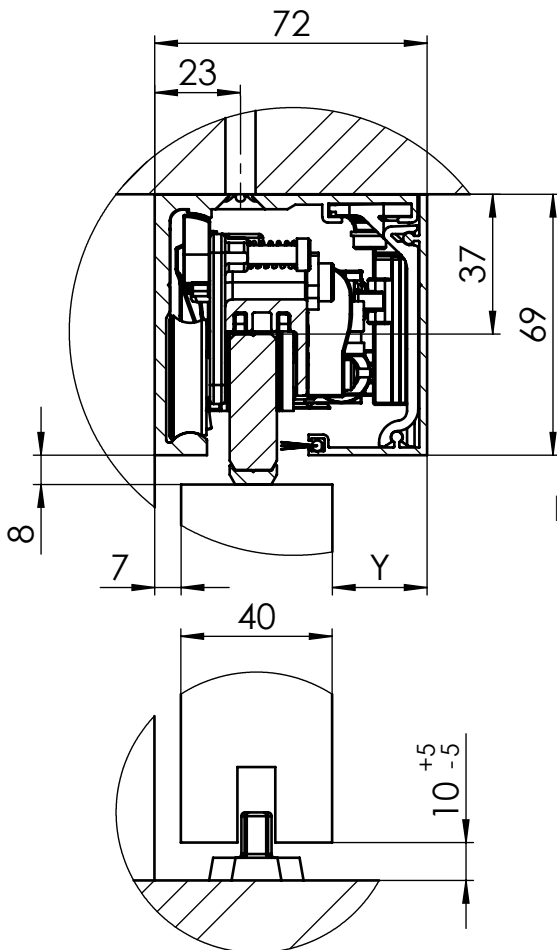


# MUTO Comfort XL DORMOTION 80 2-flügelig Holzanwendung Deckenmontage



A-A (1 : 20)

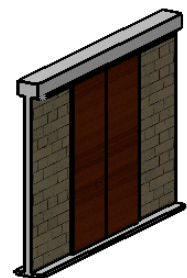
max. Flügelbreite:	2x1470mm
min. Flügelbreite:	810mm
max. Flügelhöhe:	3000mm
max. Flügelgewicht:	80kg
Holzürdicke	max. 50mm
DORMOTION	Ja
getestet nach DIN EN 1527	



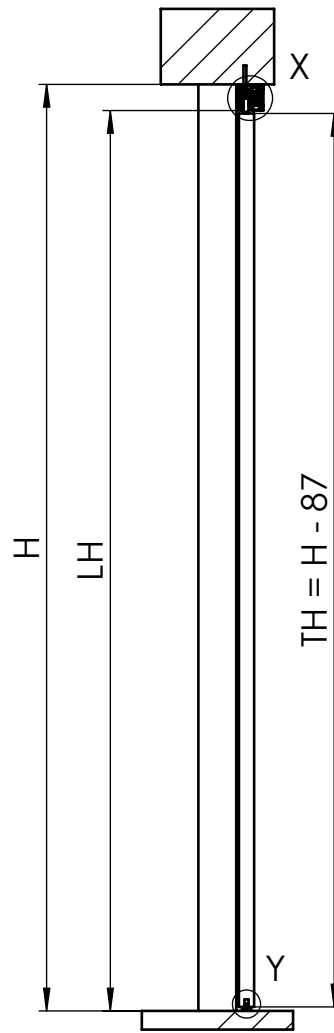
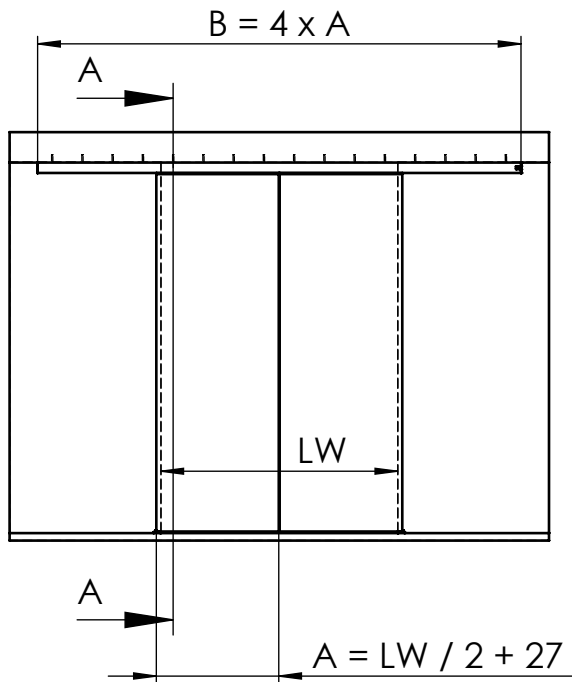
Detail X (1 : 2)

Detail Y (1 : 2)

A	Flügelbreite
B	Laufschielenlänge
TH	Türhöhe
H	Gesamthöhe
LH	lichte Höhe
LW	lichte Weite
u	Holzdicke
Y	72 - 7 - u

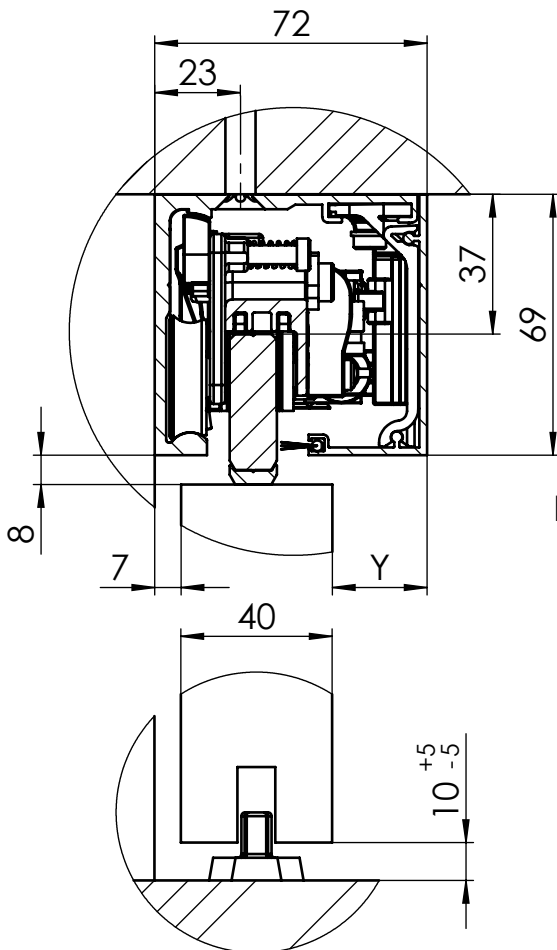


# MUTO Comfort XL DORMOTION 80 two timber door panels fixed at ceiling



A-A (1 : 20)

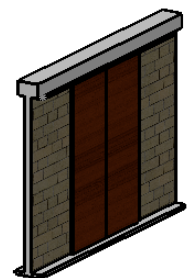
max. Door width:	2x1470mm
min. Door width:	810mm
max. Door height:	3000mm
max. Door weight :	80 kg
thickness of timber:	max. 50mm
DORMOTION subsequent	Ja
performed to DIN EN 1527	



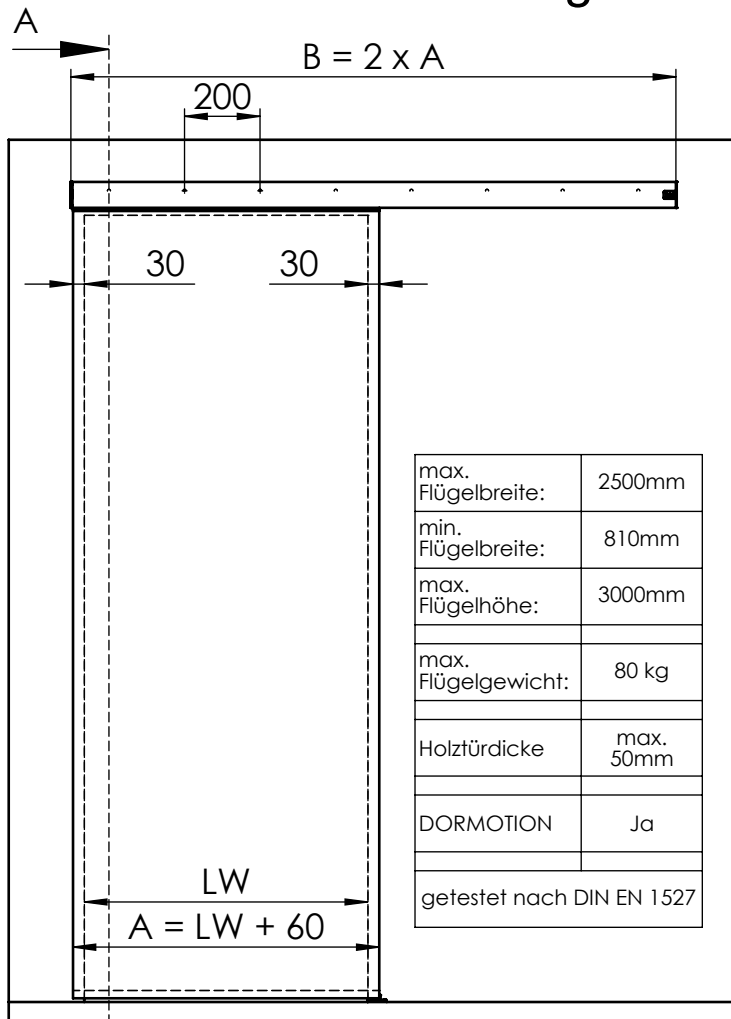
Detail X (1 : 2)

Detail Y (1 : 2)

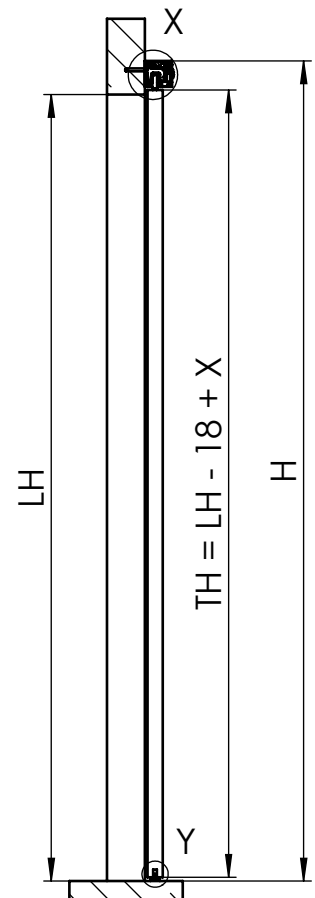
A	Door width
B	length of track
TH	Door height
H	total height
LH	clear opening height
LW	clear opening width
u	thickness of timber
Y	72 - 7 - u



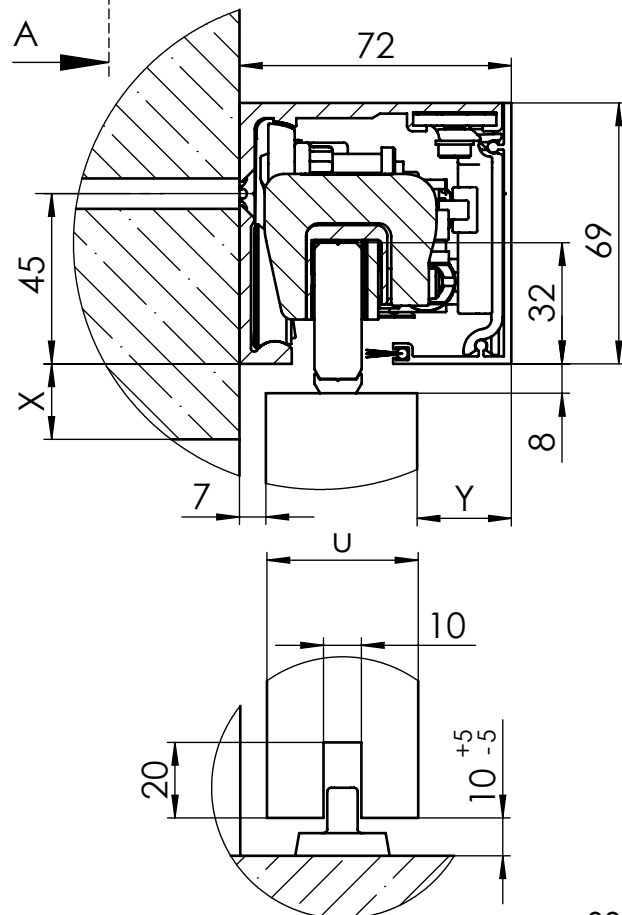
# MUTO Comfort XL DORMOTION 80 Wandmontage Holzanwendung



max. Flügelbreite:	2500mm
min. Flügelbreite:	810mm
max. Flügelhöhe:	3000mm
max. Flügelgewicht:	80 kg
Holztürdicke	max. 50mm
DORMOTION	Ja
getestet nach DIN EN 1527	



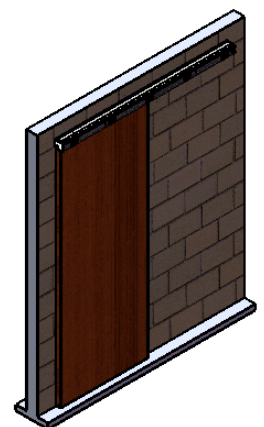
A-A



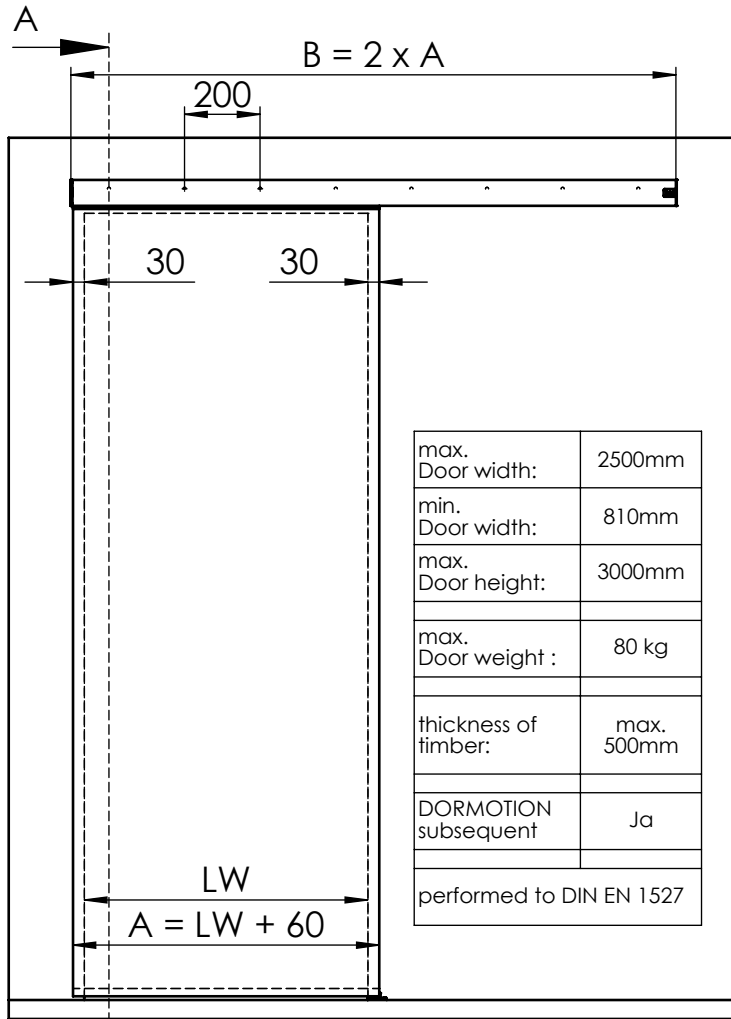
Detail X (1 : 2)

Detail Y (1 : 2)

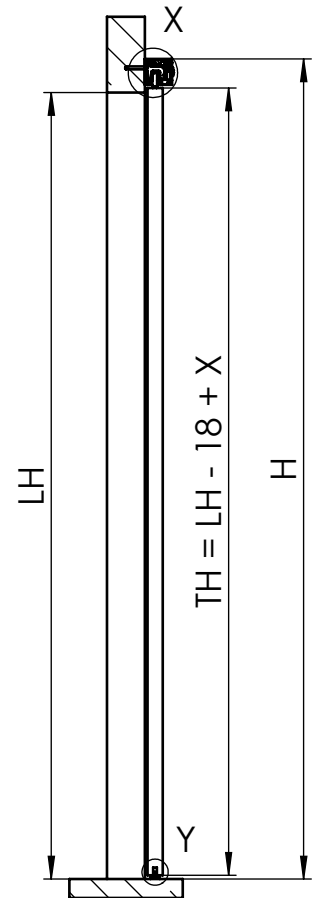
A	Flügelbreite
B	Laufschielenlänge
H	Gesamthöhe
LH	lichte Höhe
LW	lichte Weite
TH	Türhöhe
X	Überstand
Y	72 - 7 - u
u	Holzdicke



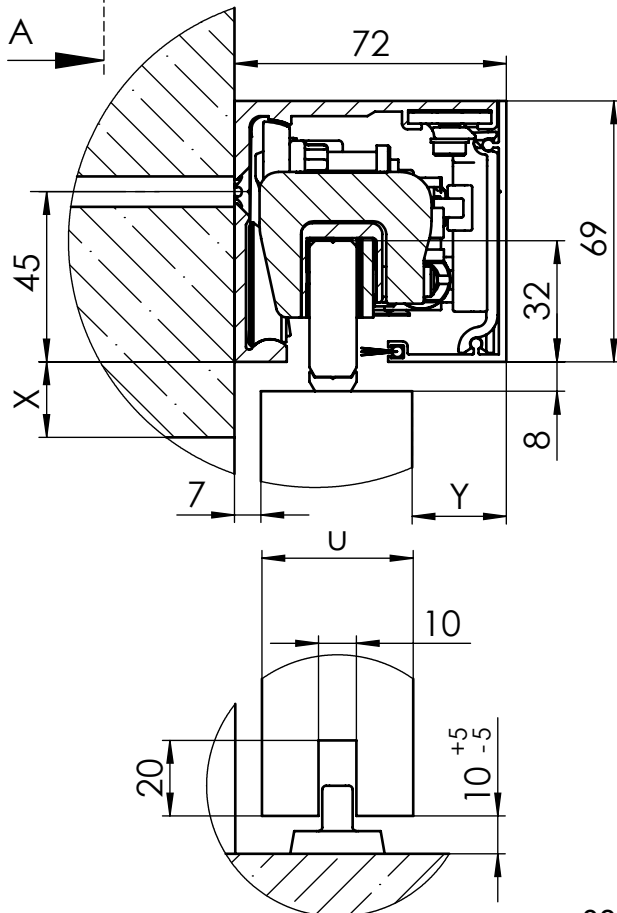
# MUTO Comfort XL DORMOTION 80 fixed at wall timber door



max. Door width:	2500mm
min. Door width:	810mm
max. Door height:	3000mm
max. Door weight :	80 kg
thickness of timber:	max. 500mm
DORMOTION subsequent	Ja
performed to DIN EN 1527	



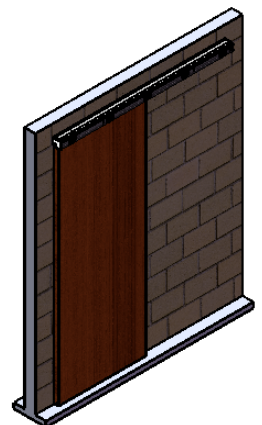
A-A



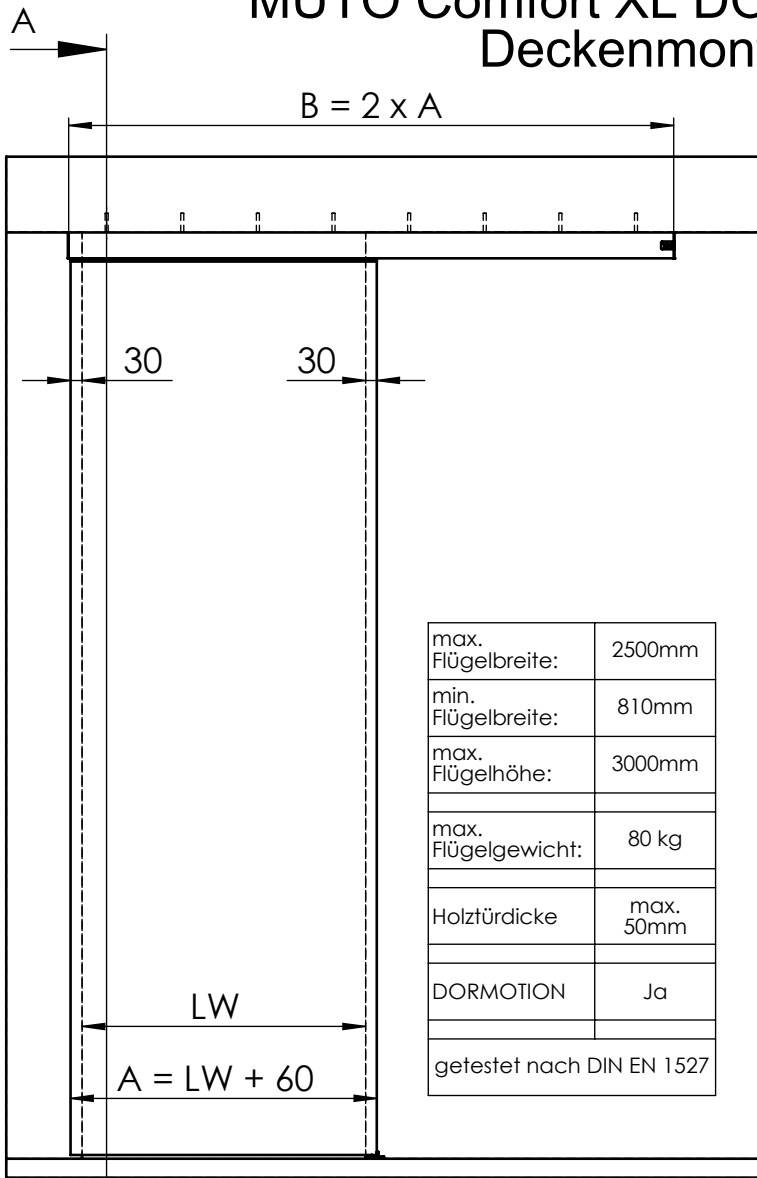
Detail X (1 : 2)

Detail Y (1 : 2)

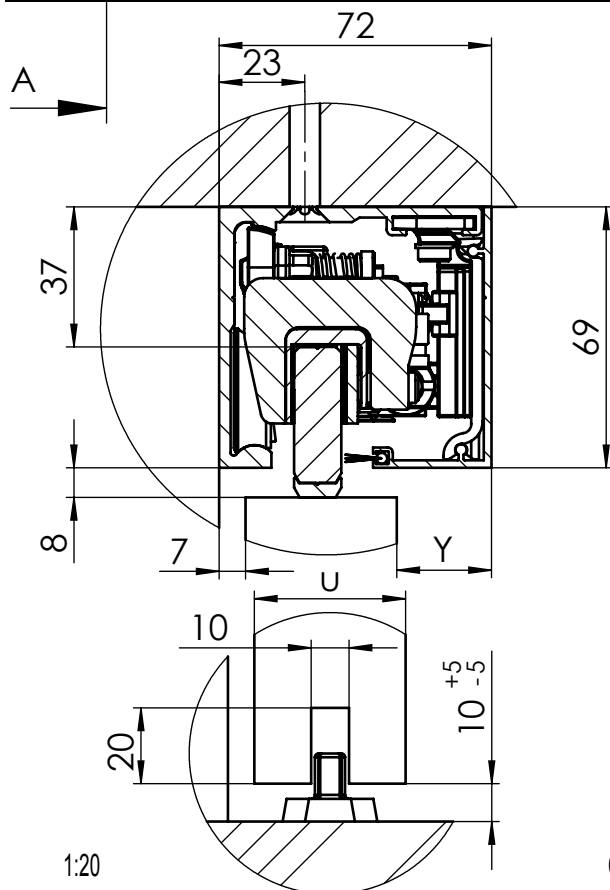
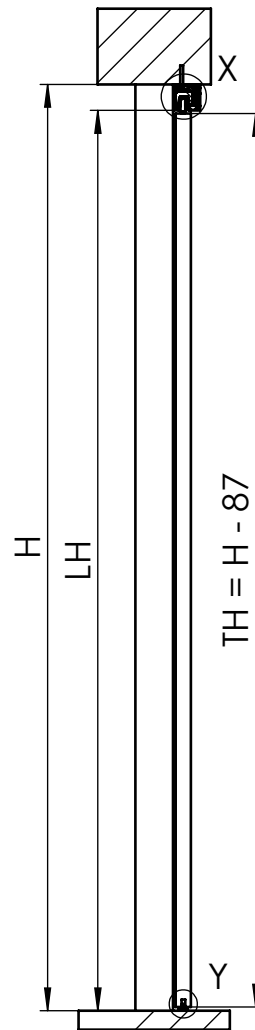
A	Door width
B	length of track
TH	Door height
H	total height
LH	clear opening height
LW	clear opening width
u	thickness of timber
X	protrusion
Y	72 - 7 - u



# MUTO Comfort XL DORMOTION 80 Deckenmontage



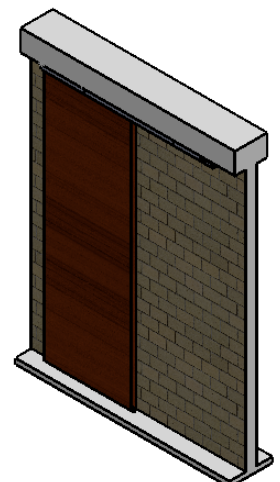
max. Flügelbreite:	2500mm
min. Flügelbreite:	810mm
max. Flügelhöhe:	3000mm
max. Flügelgewicht:	80 kg
Holztürdicke	max. 50mm
DORMOTION	Ja
getestet nach DIN EN 1527	



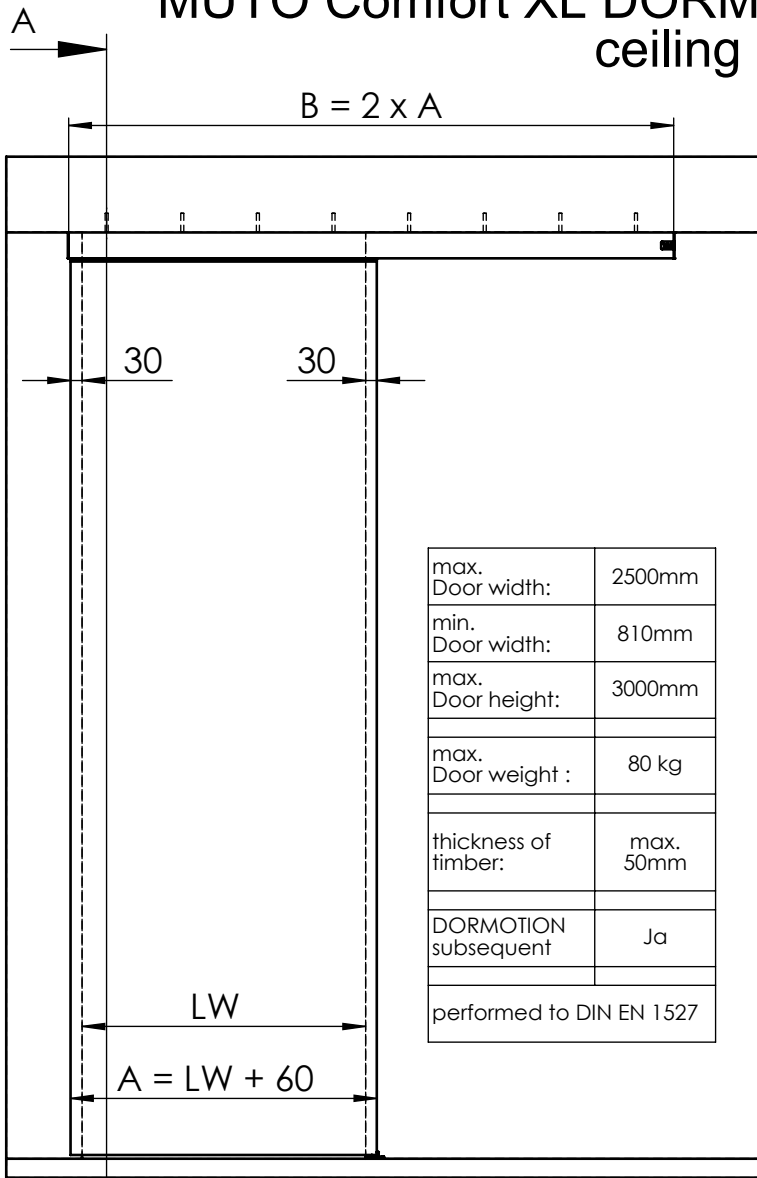
Detail X (1 : 2)

Detail Y (1 : 2)

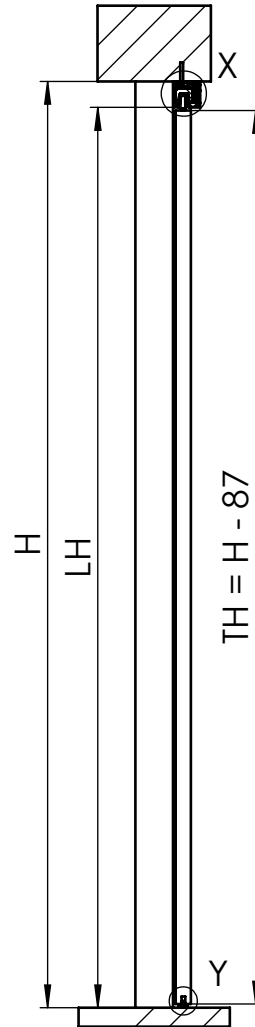
A	Flügelbreite
B	Laufschiene Länge
H	Gesamthöhe
LH	lichte Höhe
LW	lichte Weite
TH	Türhöhe
X	Überstand
Y	72 - 7 - u
u	Holzdicke



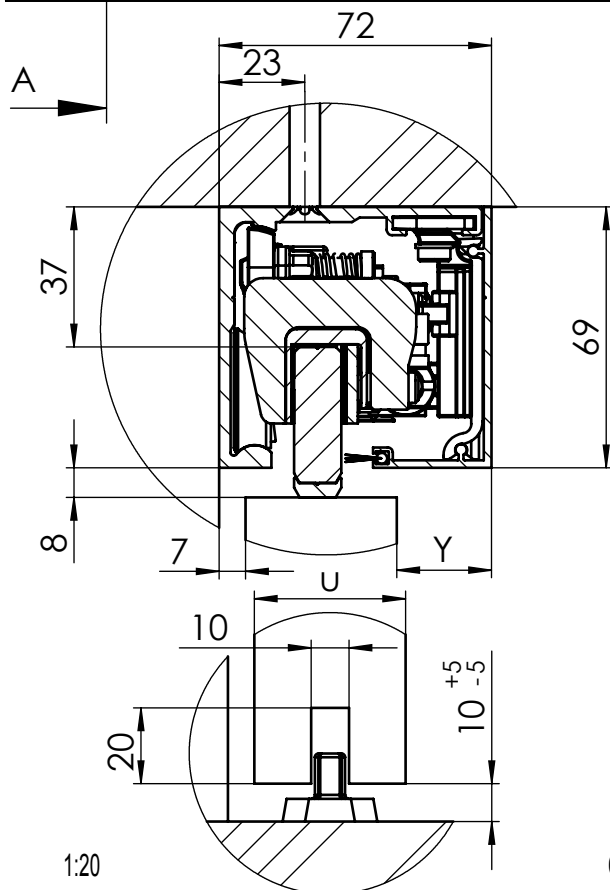
# MUTO Comfort XL DORMOTION 80 fixed at ceiling



max. Door width:	2500mm
min. Door width:	810mm
max. Door height:	3000mm
max. Door weight :	80 kg
thickness of timber:	max. 50mm
DORMOTION subsequent	Ja
performed to DIN EN 1527	

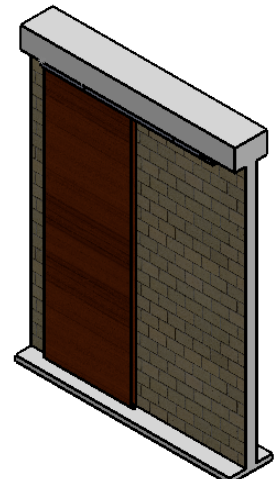


A	Door width
B	length of track
TH	Door height
H	total height
LH	clear opening height
LW	clear opening width
u	thickness of timber
X	protrusion
Y	72 - 7 - u



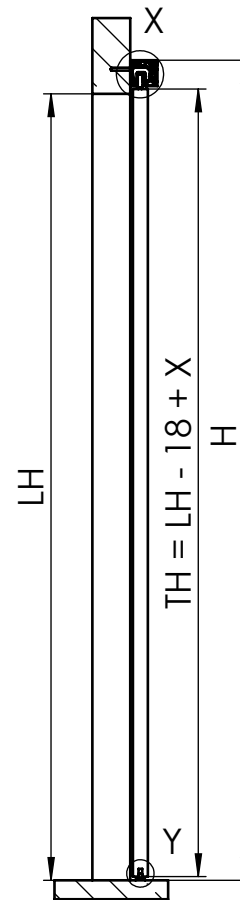
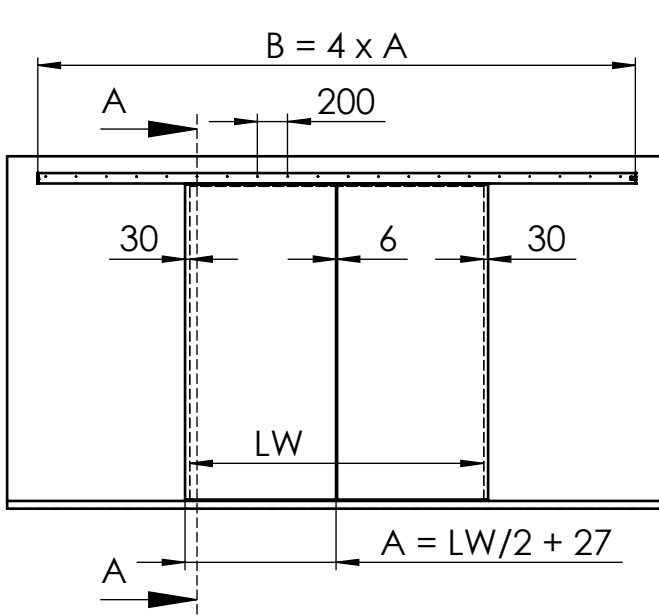
Detail X (1 : 2)

Detail Y (1 : 2)



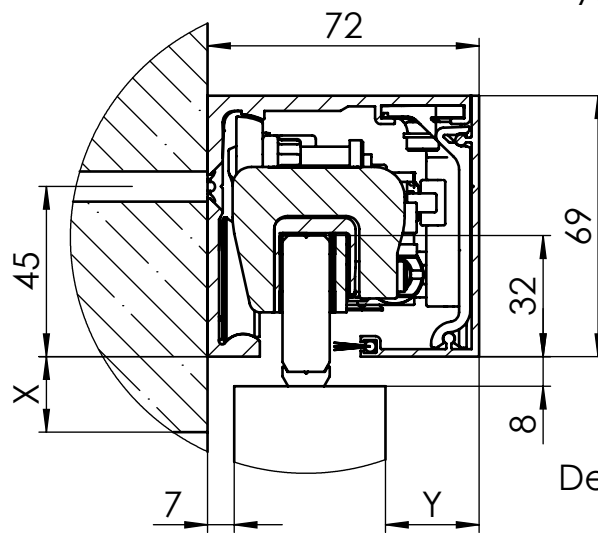


# MUTO Comfort XL DORMOTION 150 2-flügelig Holzanwendung Wandmontage

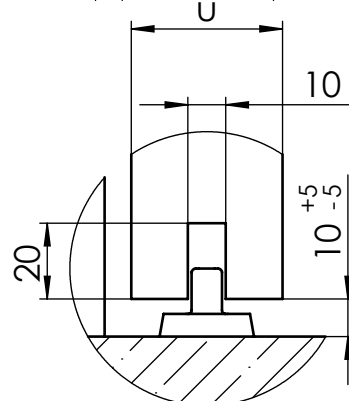


A-A (1 : 20)

max. Flügelbreite:	2x1470mm
min. Flügelbreite:	1020mm
max. Flügelhöhe:	3000mm
max. Flügelgewicht:	150kg
Holzstärke:	max. 50mm
DORMOTION	Ja
getestet nach DIN EN 1527	

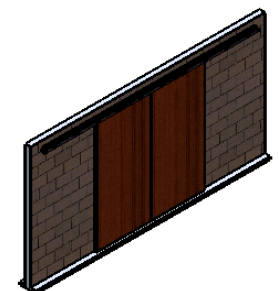


Detail X (1 : 2)

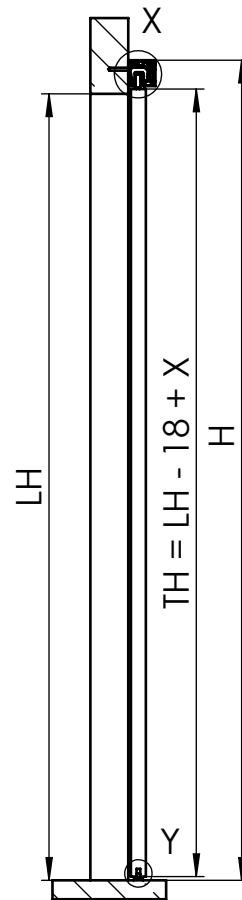
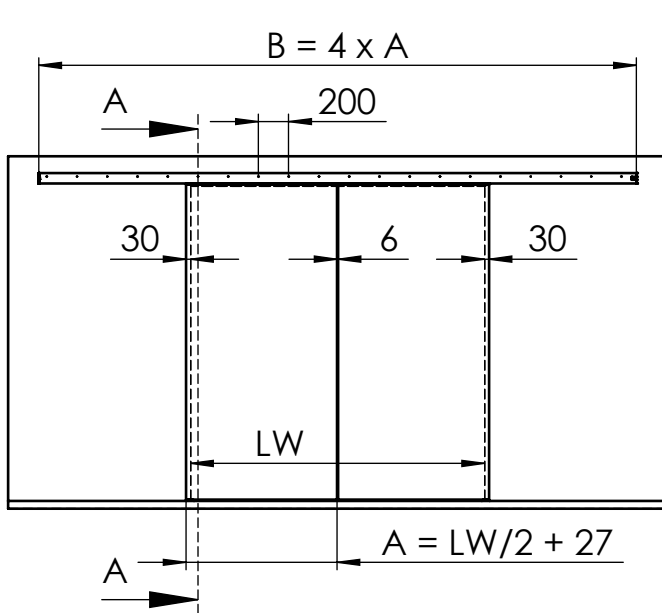


Detail Y (1 : 2)

A	Flügelbreite
B	Laufschiene Länge
TH	Türhöhe
H	Gesamthöhe
LH	lichte Höhe
LW	lichte Weite
Y	72 - 7 - u
X	Überstand
u	Holzdicke

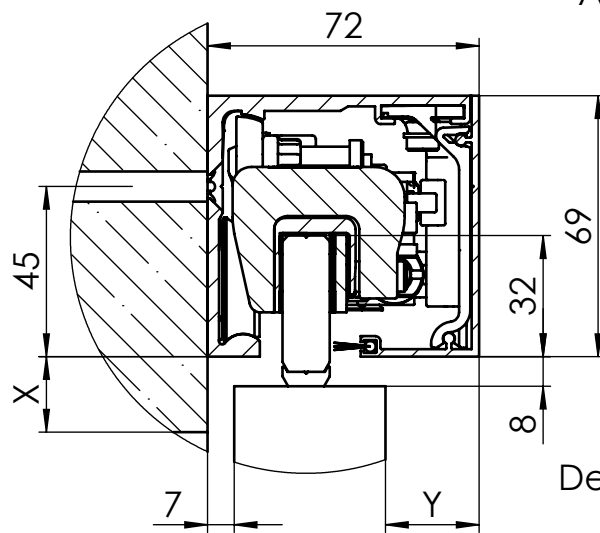


# MUTO Comfort XL DORMOTION 150 two timber door panels fixed at wall

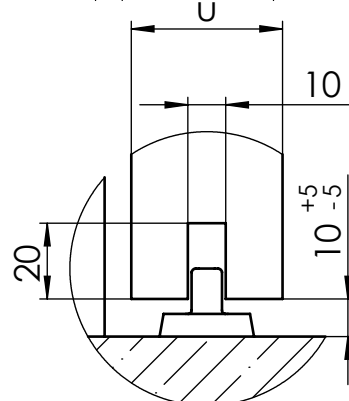


A-A (1 : 20)

max. Door width:	2x1470mm
min. Door width:	1020mm
max. Door height:	3000mm
max. Door weight :	150 kg
max. thickness of timber:	max. 50mm
DORMOTION subsequent	yes
performed to DIN EN 1527	

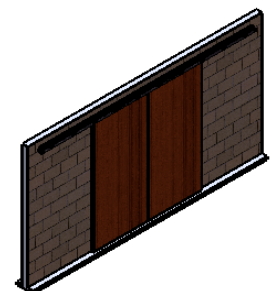


Detail X (1 : 2)

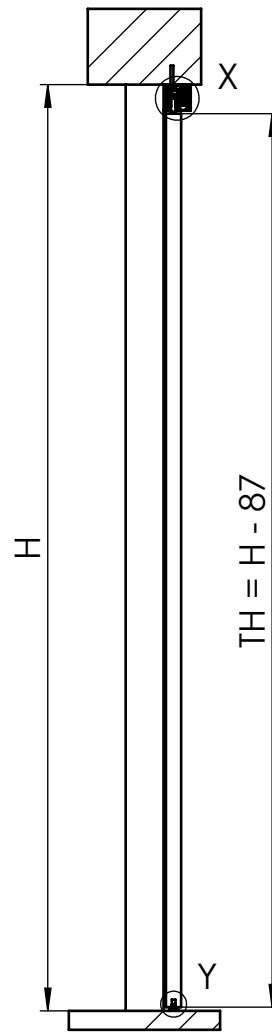
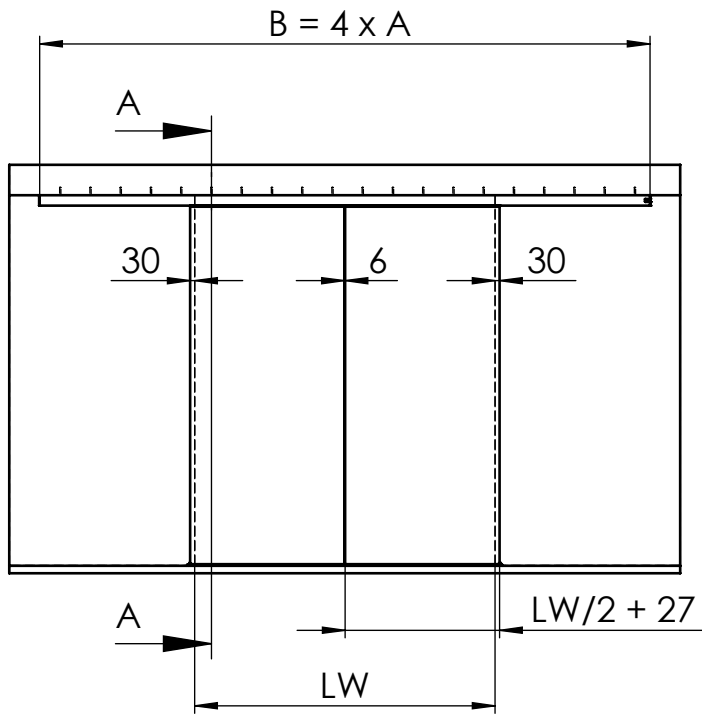


Detail Y (1 : 2)

A	Door width
B	length of track
TH	Door height
H	total height
LH	clear opening height
LW	clear opening width
Y	$72 - 7 - u$
X	protrusion
u	thickness of timber

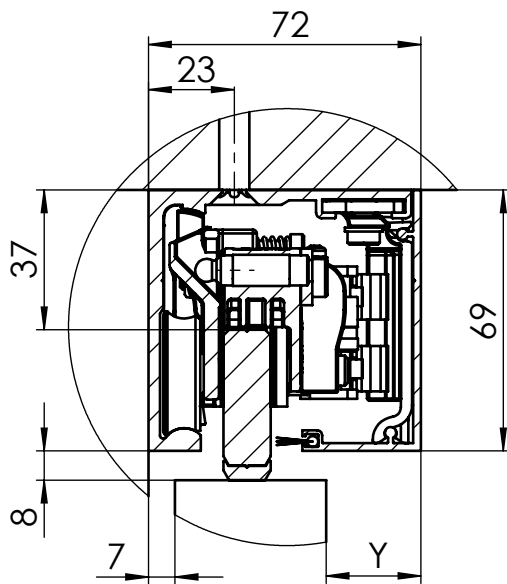


# MUTO Comfort XL DORMOTION 150 2-flügelig Holzanwendung Deckenmontage

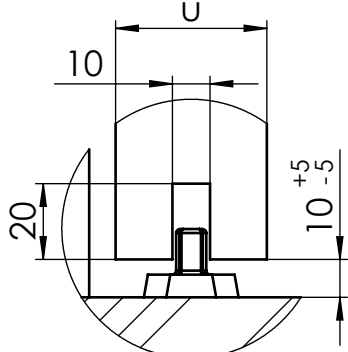


A-A (1 : 20)

max. Flügelbreite:	2x1470mm
min. Flügelbreite:	1020mm
max. Flügelhöhe:	3000mm
max. Flügelgewicht:	150 kg
Holzürdicke	max. 50mm
DORMOTION	Ja
getestet nach DIN EN 1527	

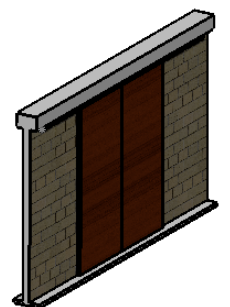


Detail X (1 : 2)

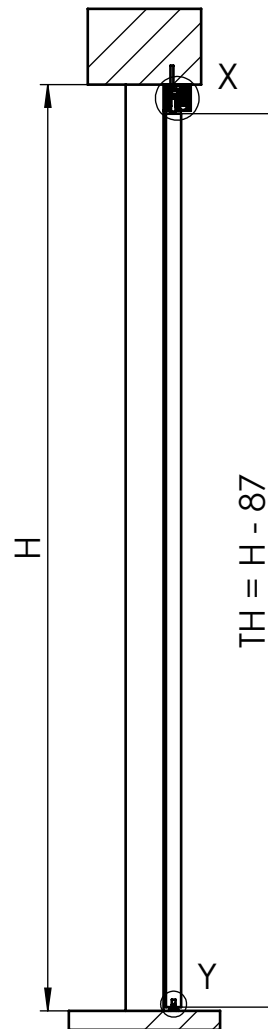
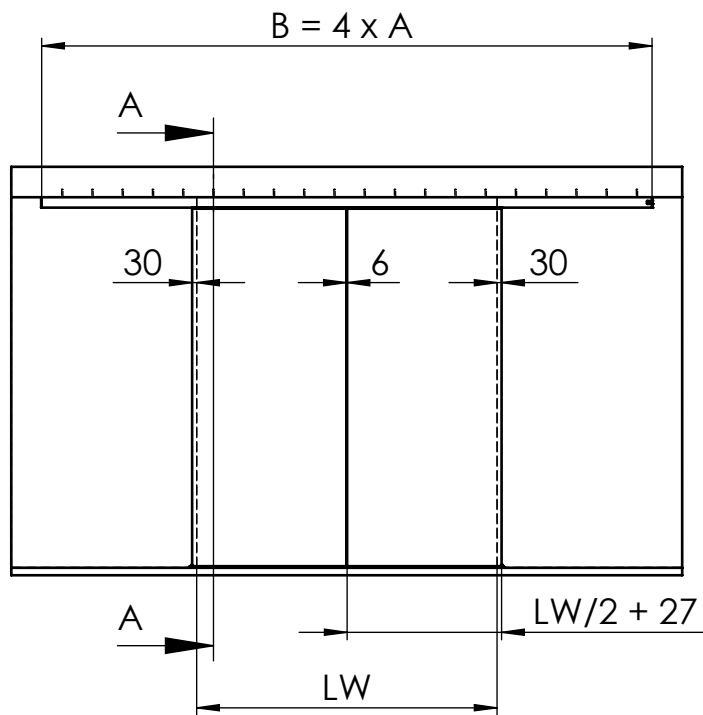


Detail Y (1 : 2)

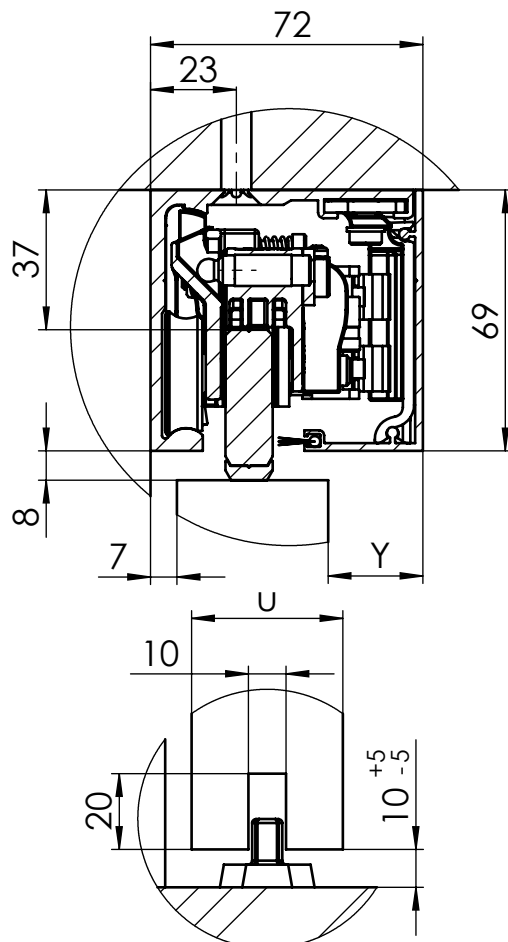
A	Flügelbreite
B	Laufschielenlänge
TH	Türhöhe
H	Gesamthöhe
LH	lichte Höhe
LW	lichte Weite
u	Holzdicke
Y	$72 - 7 - u$



# MUTO Comfort XL DORMOTION 150 two timber door panels fixed at ceiling



A-A (1 : 20)

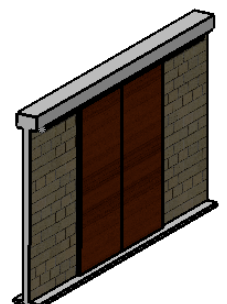


Detail X (1 : 2)

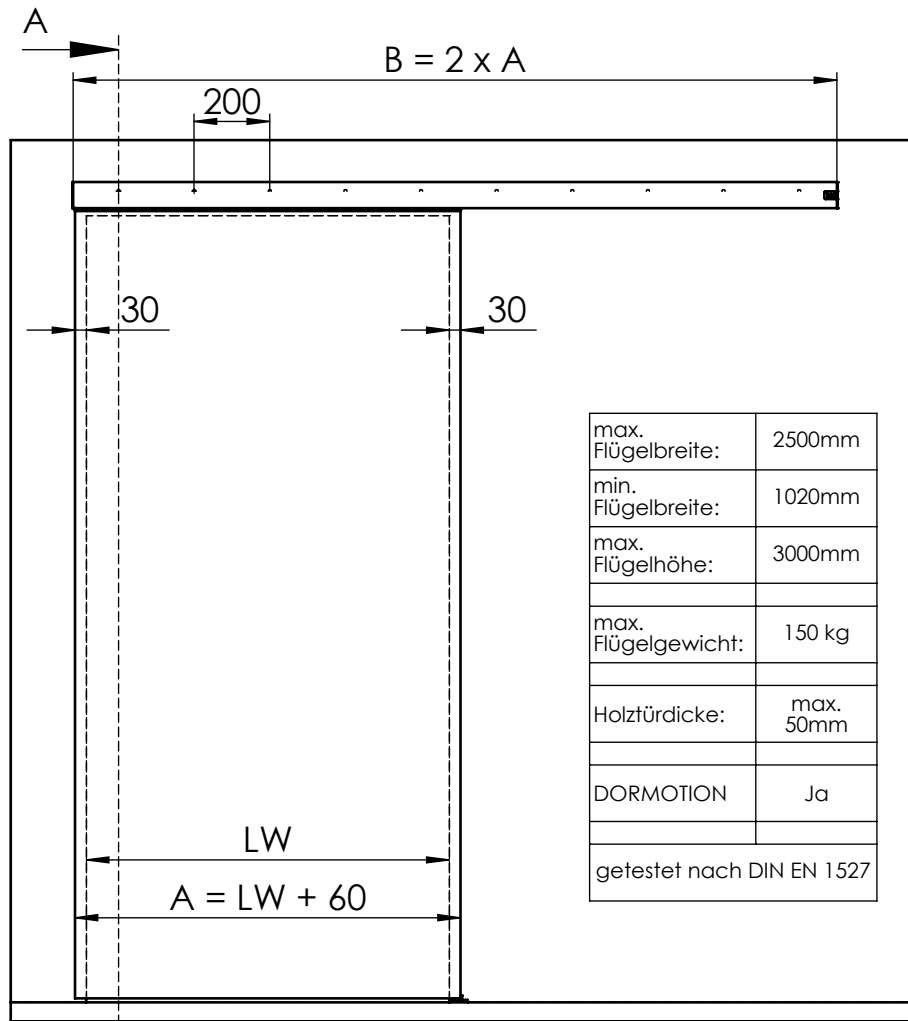
Detail Y (1 : 2)

max. Door width:	2x1470mm
min. Door width:	1020mm
max. Door height:	3000mm
max. Door weight :	150 kg
thickness of timber:	max. 50mm
DORMOTION subsequent	Ja
performed to DIN EN 1527	

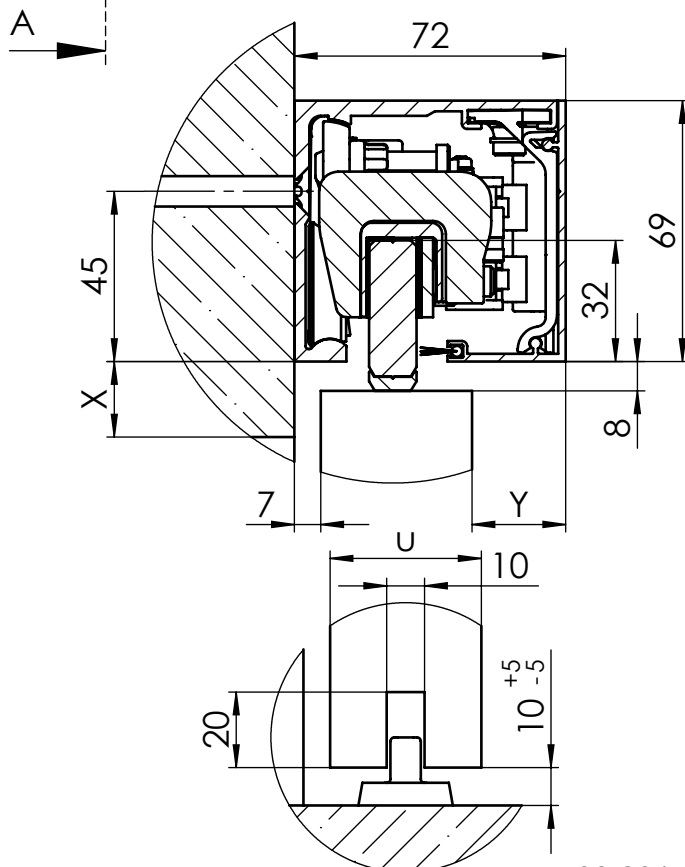
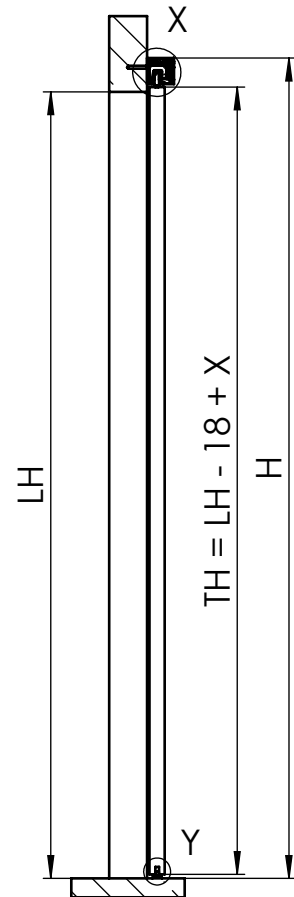
A	Door width
B	length of track
TH	Door height
H	total height
LH	clear opening height
LW	clear opening width
u	thickness of timber
Y	72 - 7 - u



# MUTO Comfort XL DORMOTION 150 Holzanwendung Wandmontage



max. Flügelbreite:	2500mm
min. Flügelbreite:	1020mm
max. Flügelhöhe:	3000mm
max. Flügelgewicht:	150 kg
Holzürdicke:	max. 50mm
DORMOTION	Ja
getestet nach DIN EN 1527	

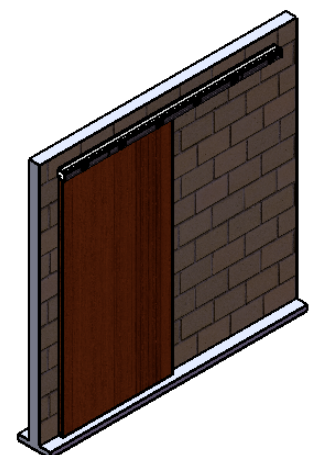


Detail X (1 : 2)

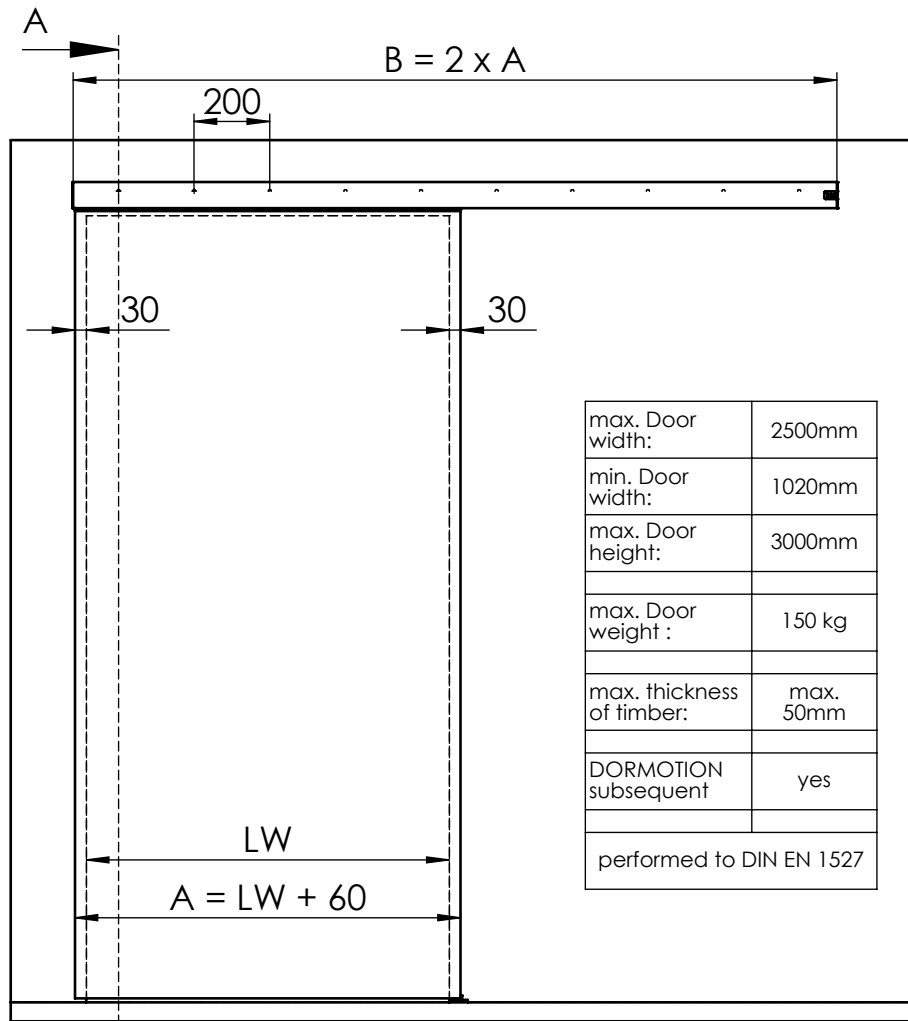
Detail Y (1 : 2)

A-A

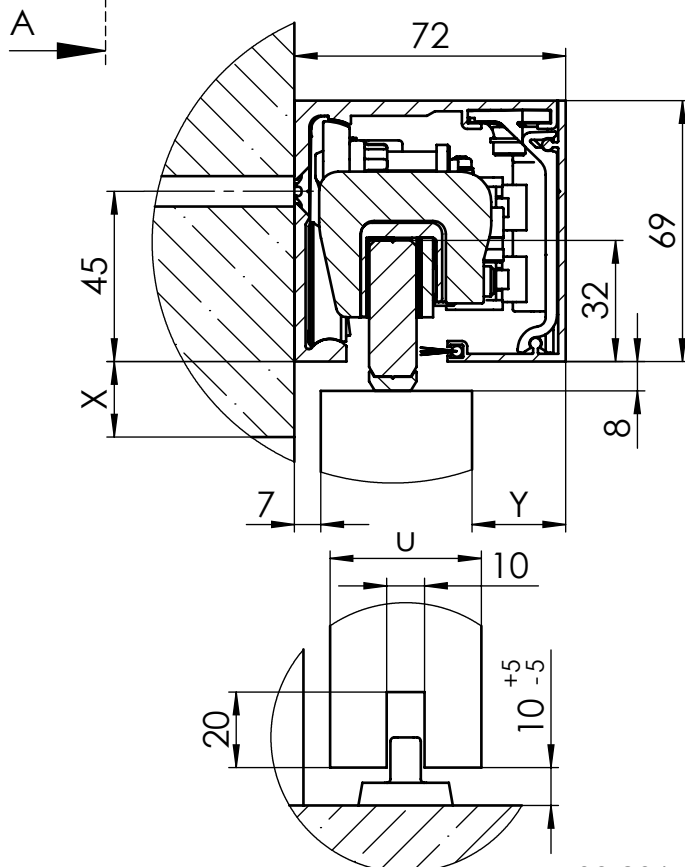
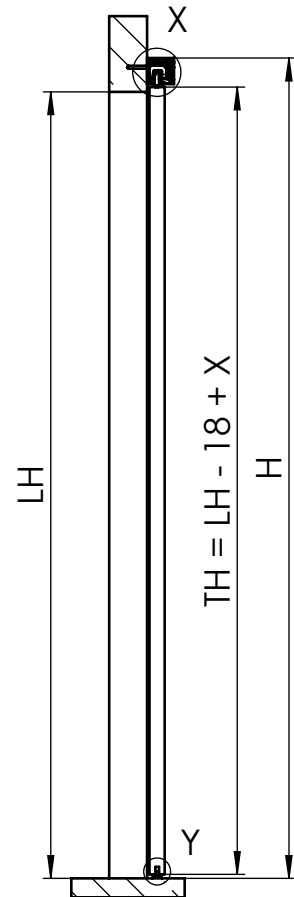
A	Flügelbreite
B	Laufschiene Länge
TH	Türhöhe
H	Gesamthöhe
LH	lichte Höhe
LW	lichte Weite
u	Holzdicke
X	Überstand
Y	72 - 7 - u



# MUTO Comfort XL DORMOTION 150 timber door fixed at Wall



max. Door width:	2500mm
min. Door width:	1020mm
max. Door height:	3000mm
max. Door weight :	150 kg
max. thickness of timber:	max. 50mm
DORMOTION subsequent	yes
performed to DIN EN 1527	

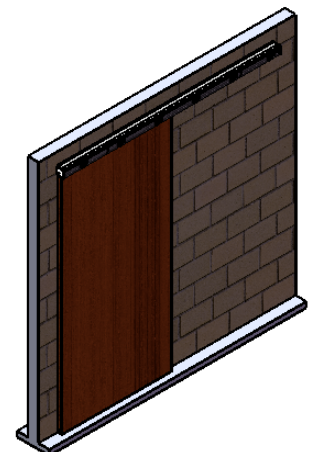


Detail X (1 : 2)

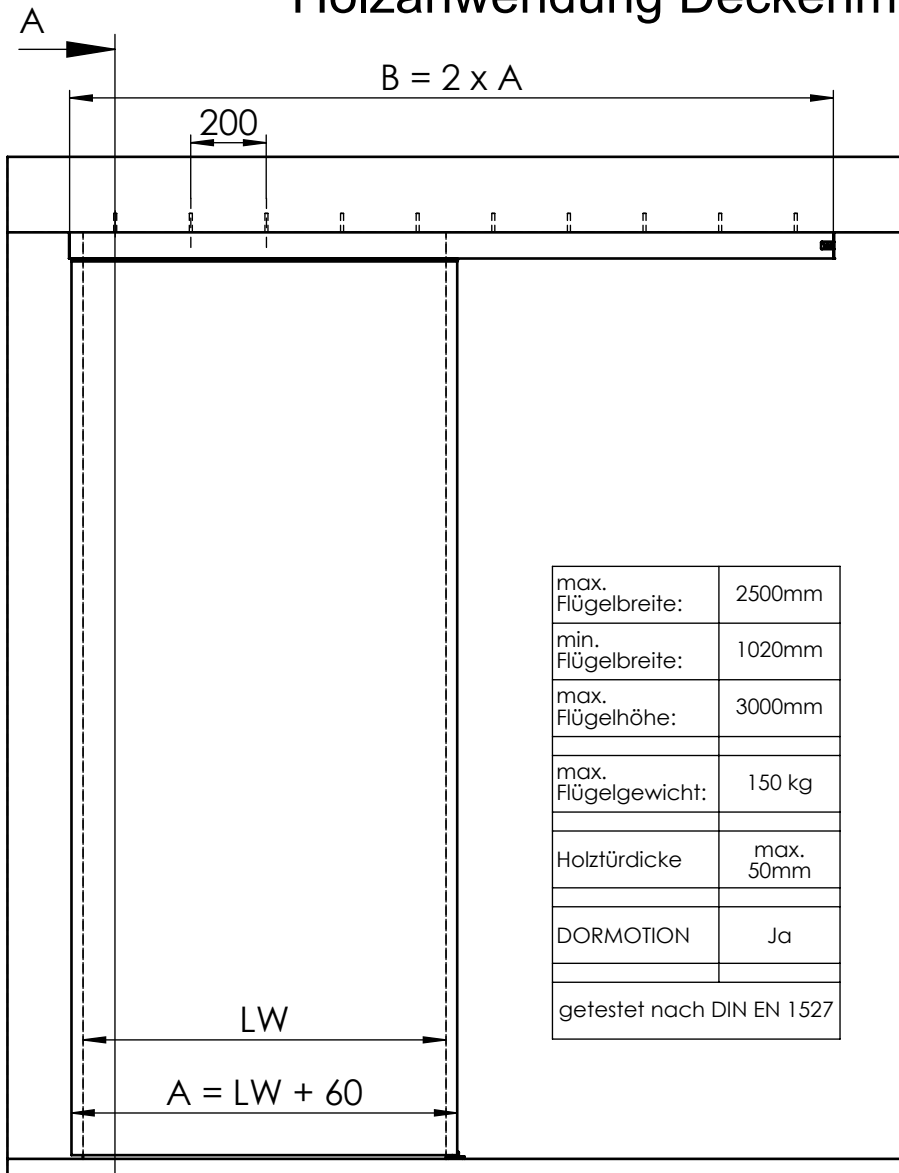
Detail Y (1 : 2)

A-A

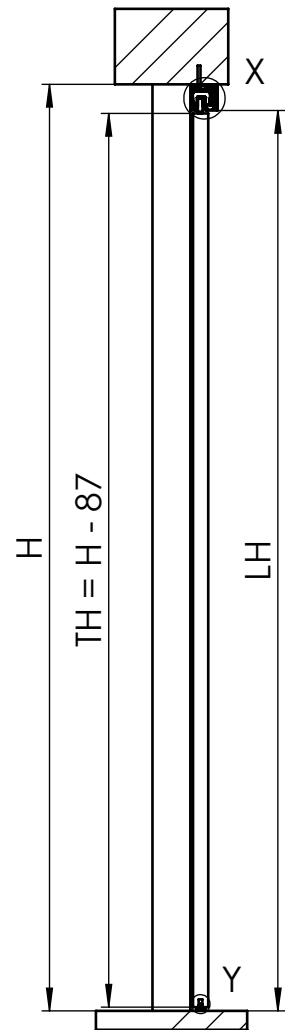
A	Door width
B	length of track
TH	Door height
H	total height
LH	clear opening height
LW	clear opening width
Y	72 - 7 - u
X	protrusion
u	thickness of timber



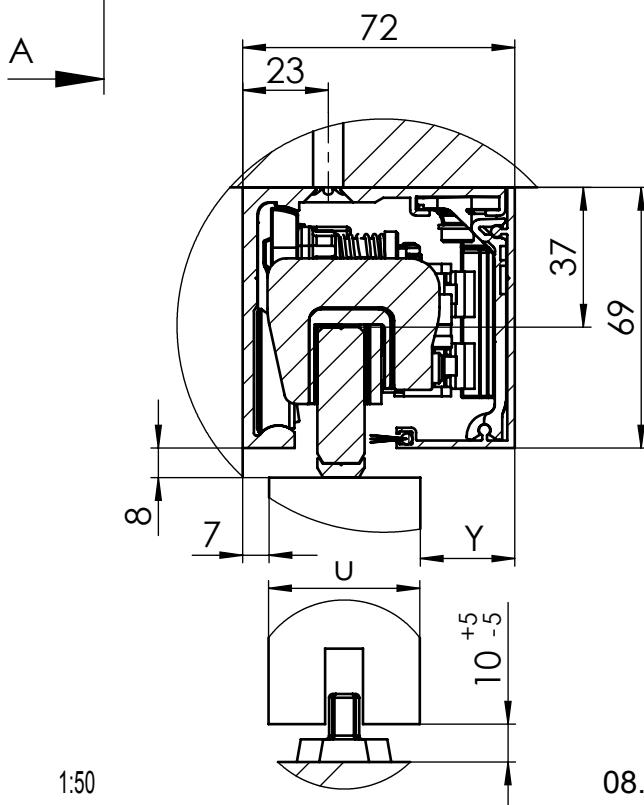
# MUTO Comfort XL DORMOTION 150 Holzanwendung Deckenmontage



max. Flügelbreite:	2500mm
min. Flügelbreite:	1020mm
max. Flügelhöhe:	3000mm
max. Flügelgewicht:	150 kg
Holztürdicke	max. 50mm
DORMOTION	Ja
getestet nach DIN EN 1527	



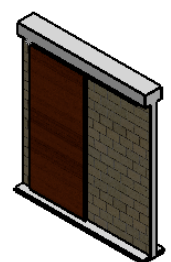
A-A (1 : 20)



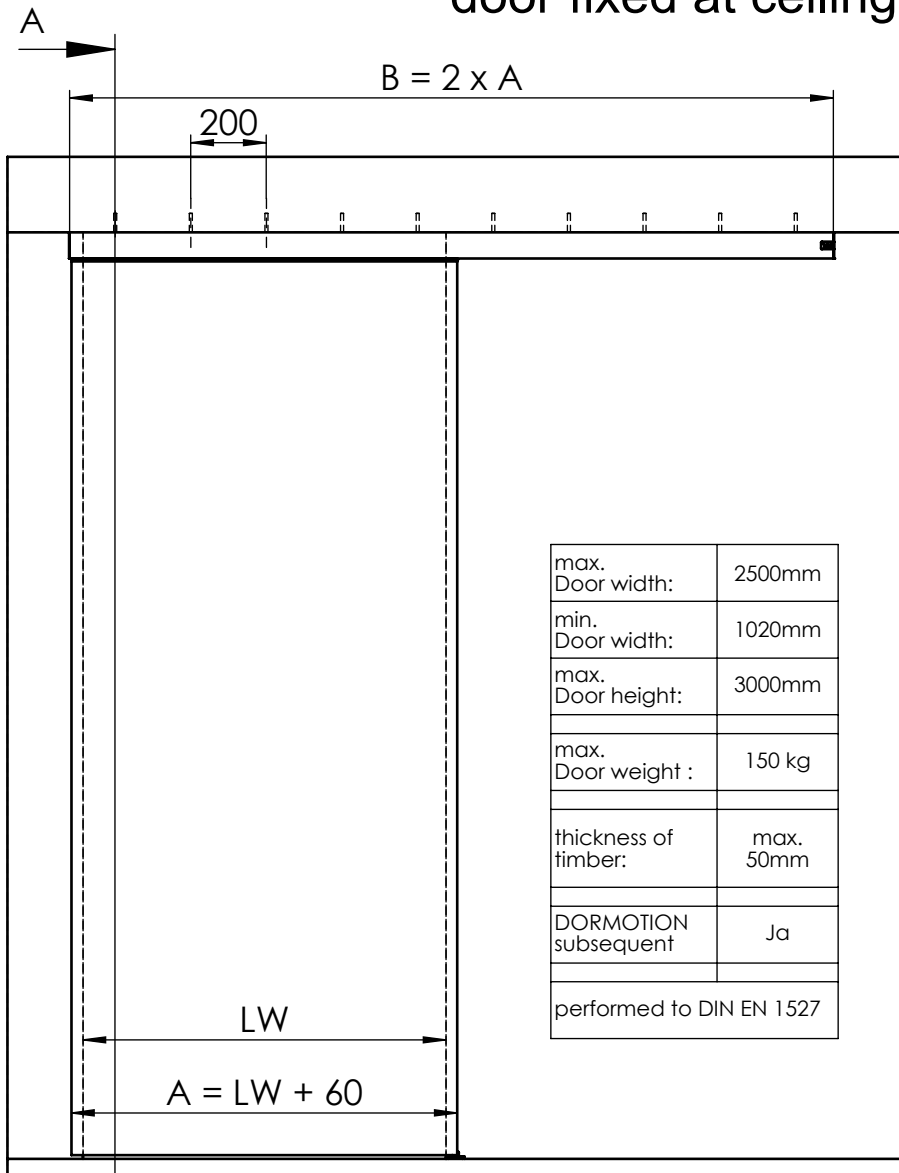
Detail X (1 : 2)

Detail Y (1 : 2)

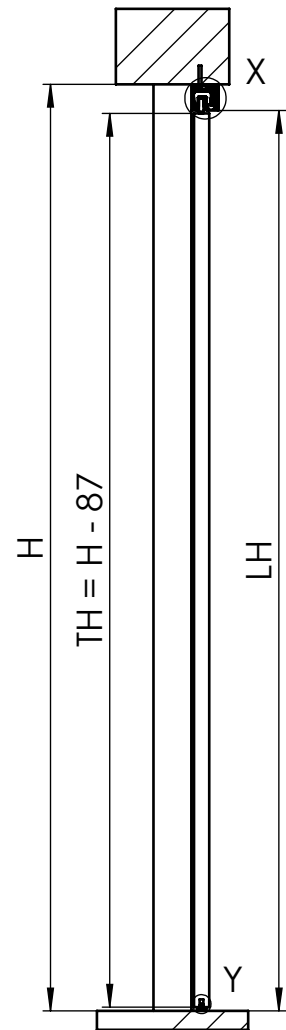
A	Flügelbreite
B	Laufschiene Länge
TH	Türhöhe
H	Gesamthöhe
LH	lichte Höhe
LW	lichte Weite
u	Holzdicke
Y	72 - 7 - u



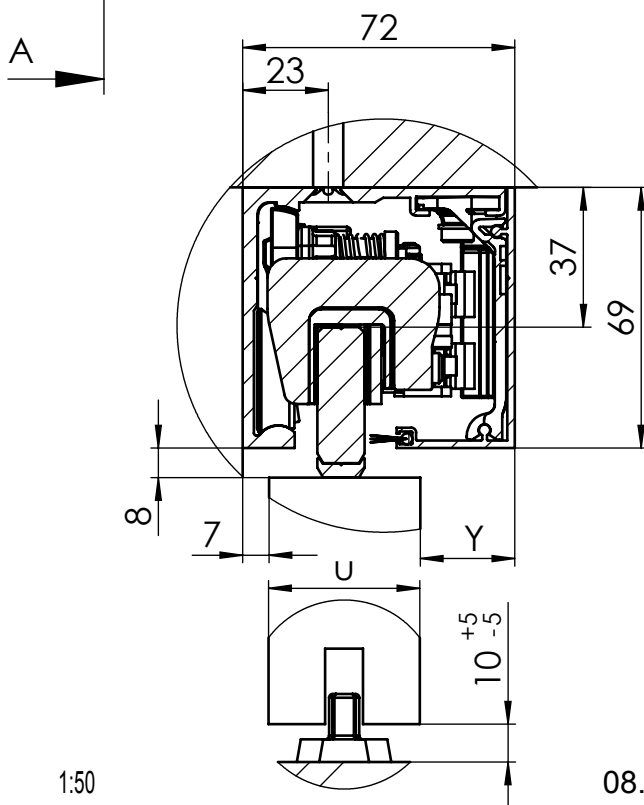
# MUTO Comfort XL DORMOTION 150 timber door fixed at ceiling



max. Door width:	2500mm
min. Door width:	1020mm
max. Door height:	3000mm
max. Door weight :	150 kg
thickness of timber:	max. 50mm
DORMOTION subsequent	Ja
performed to DIN EN 1527	



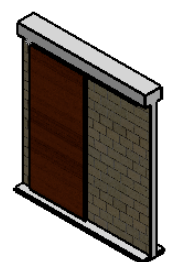
A-A (1 : 20)



Detail X (1 : 2)

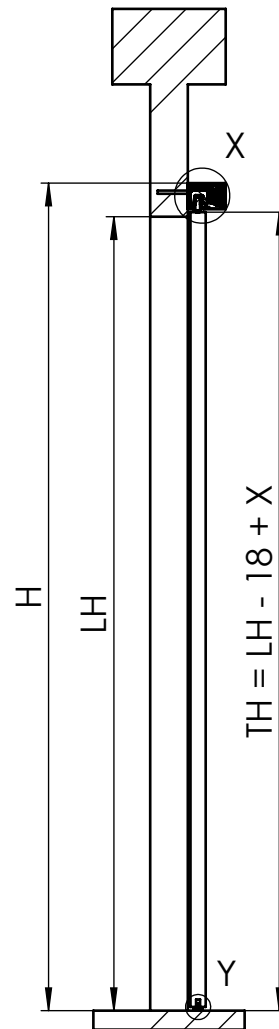
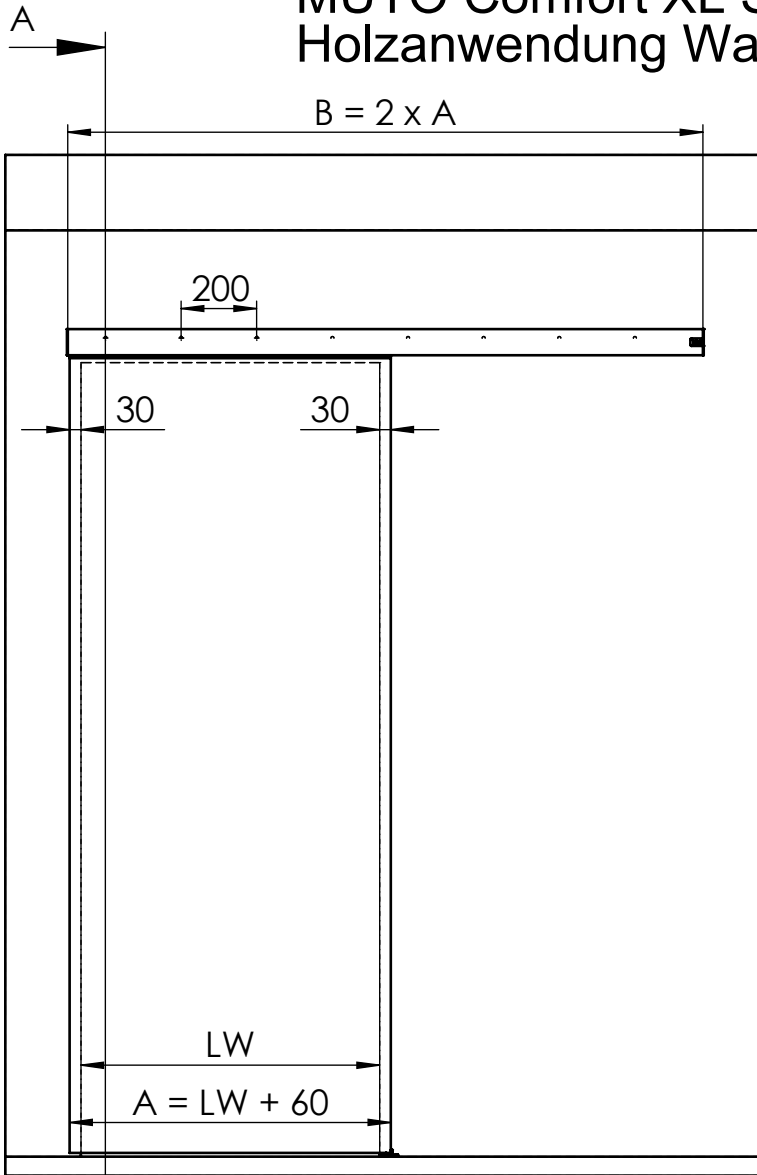
Detail Y (1 : 2)

A	Door width
B	length of track
TH	Door height
H	total height
LH	clear opening height
LW	clear opening width
u	thickness of timber
X	protrusion
Y	72 - 7 - u

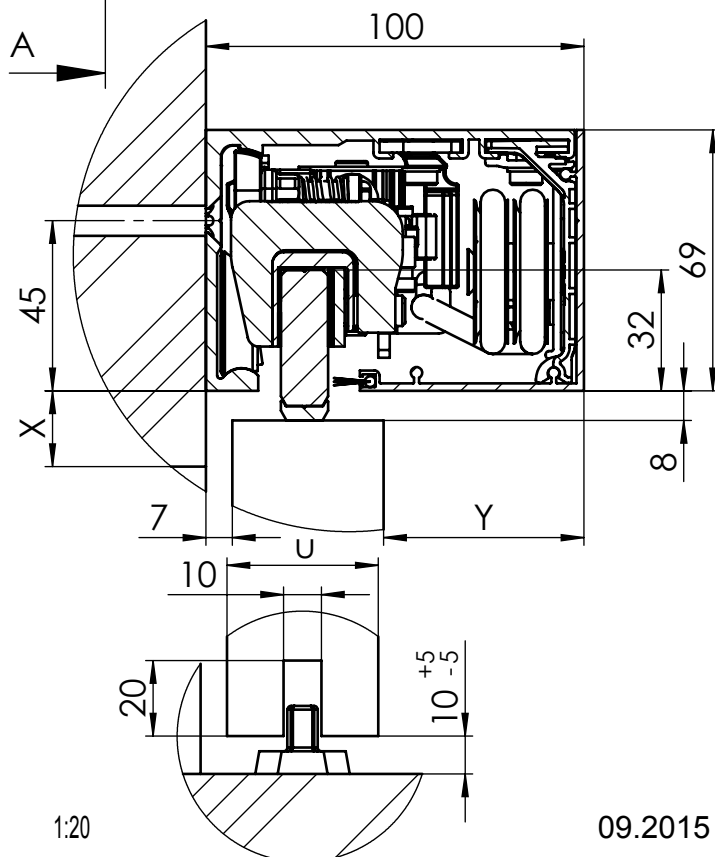




# MUTO Comfort XL Self-Closing Holzanwendung Wandmontage



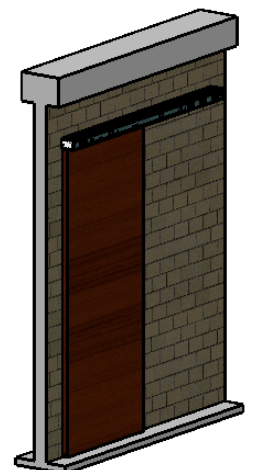
max. Flügelbreite:	1500mm
min. Flügelbreite:	850mm
max. Flügelhöhe:	3000mm
max. Flügelgewicht:	120 kg
Holzürdicke	max. 50mm
DORMOTION	Ja
getestet nach DIN EN 1527	



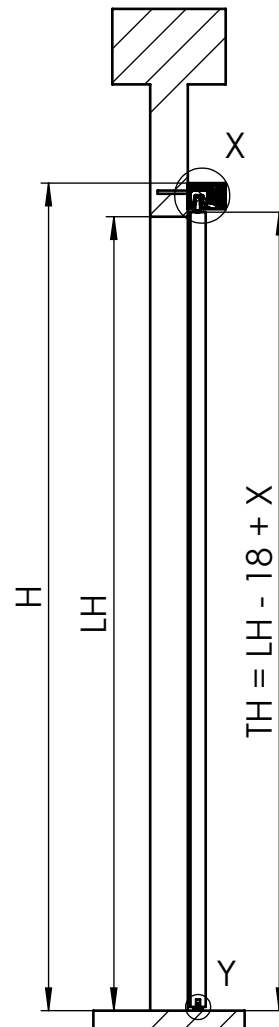
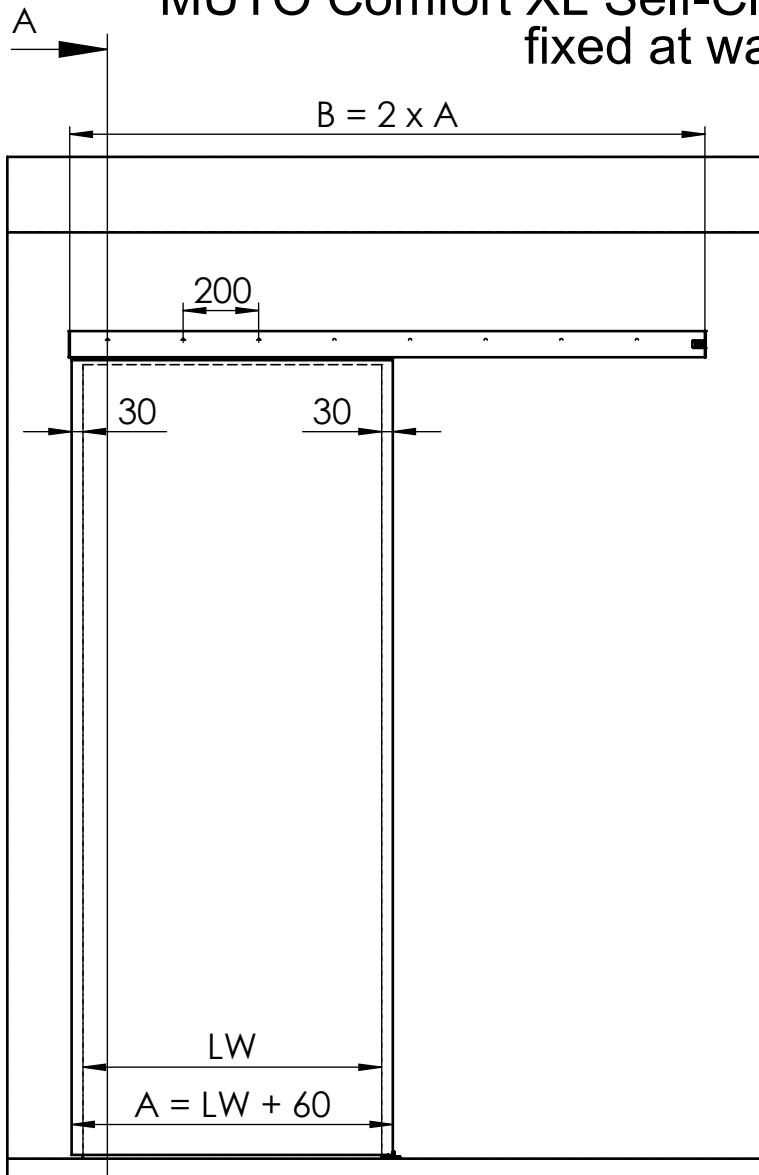
Detail X (1 : 2)

Detail Y (1 : 2)

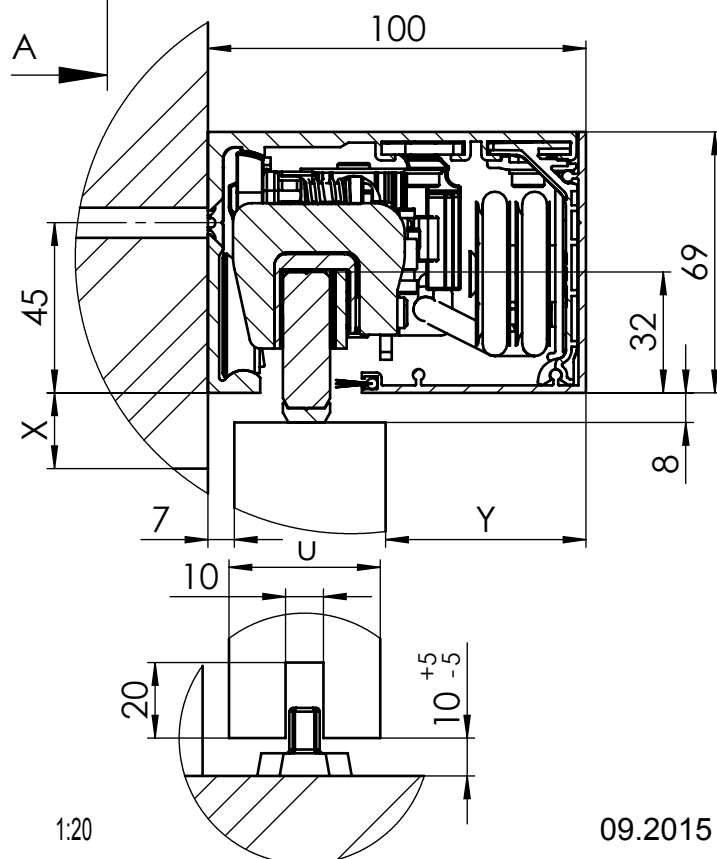
A	Flügelbreite
B	Laufschielenlänge
TH	Türhöhe
H	Gesamthöhe
LH	lichte Höhe
LW	lichte Weite
u	Holzdicke
X	Überstand
Y	$100 - 7 - u$



# MUTO Comfort XL Self-Closing timber door fixed at wall



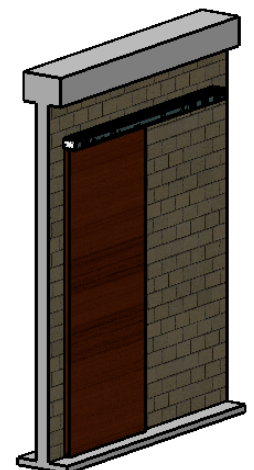
max. Door width:	1500mm
min. Door width:	850mm
max. Door height:	3000mm
max. Door weight :	120 kg
thickness of timber:	max. 50mm
DORMOTION subsequent	Ja
performed to DIN EN 1527	



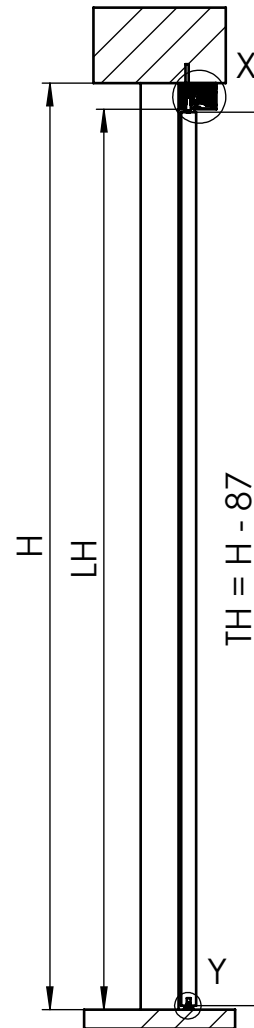
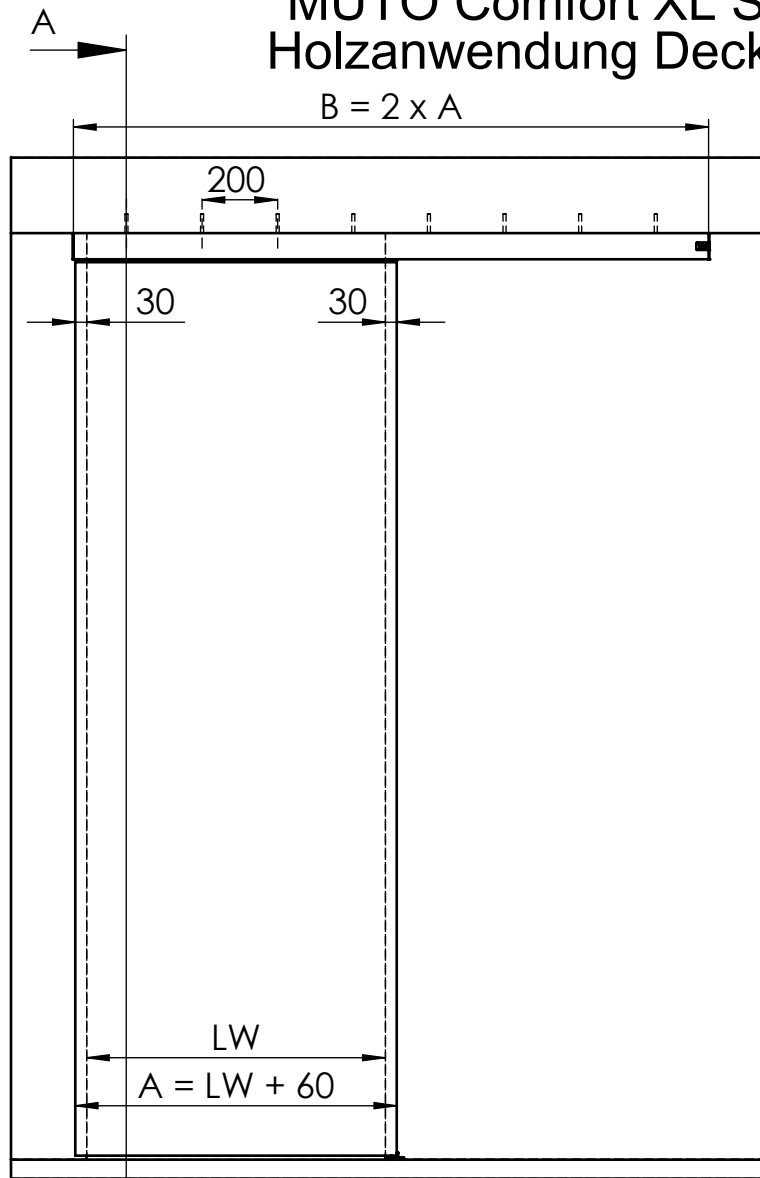
Detail X (1 : 2)

Detail Y (1 : 2)

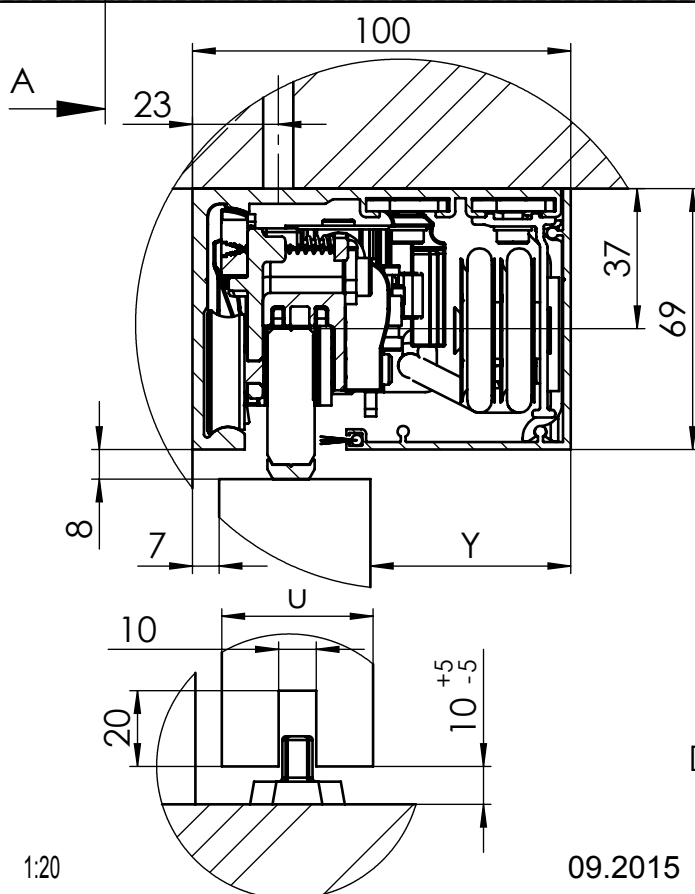
A	Door width
B	length of track
TH	Door height
H	total height
LH	clear opening height
LW	clear opening width
u	thickness of timber
X	protrusion
Y	100 - 7 - u



# MUTO Comfort XL Self-Closing Holzanwendung Deckenmontage



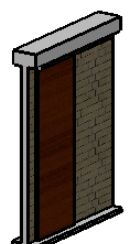
max. Flügelbreite:	1500mm
min. Flügelbreite:	850mm
max. Flügelhöhe:	3000mm
max. Flügelgewicht:	120 kg
Holztürdicke	max. 50mm
DORMOTION	Ja
getestet nach DIN EN 1527	



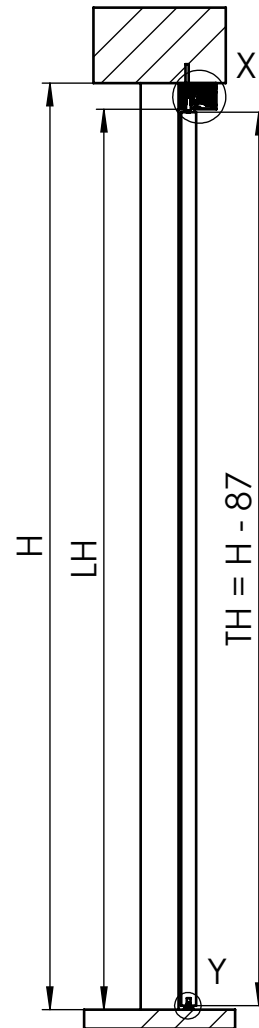
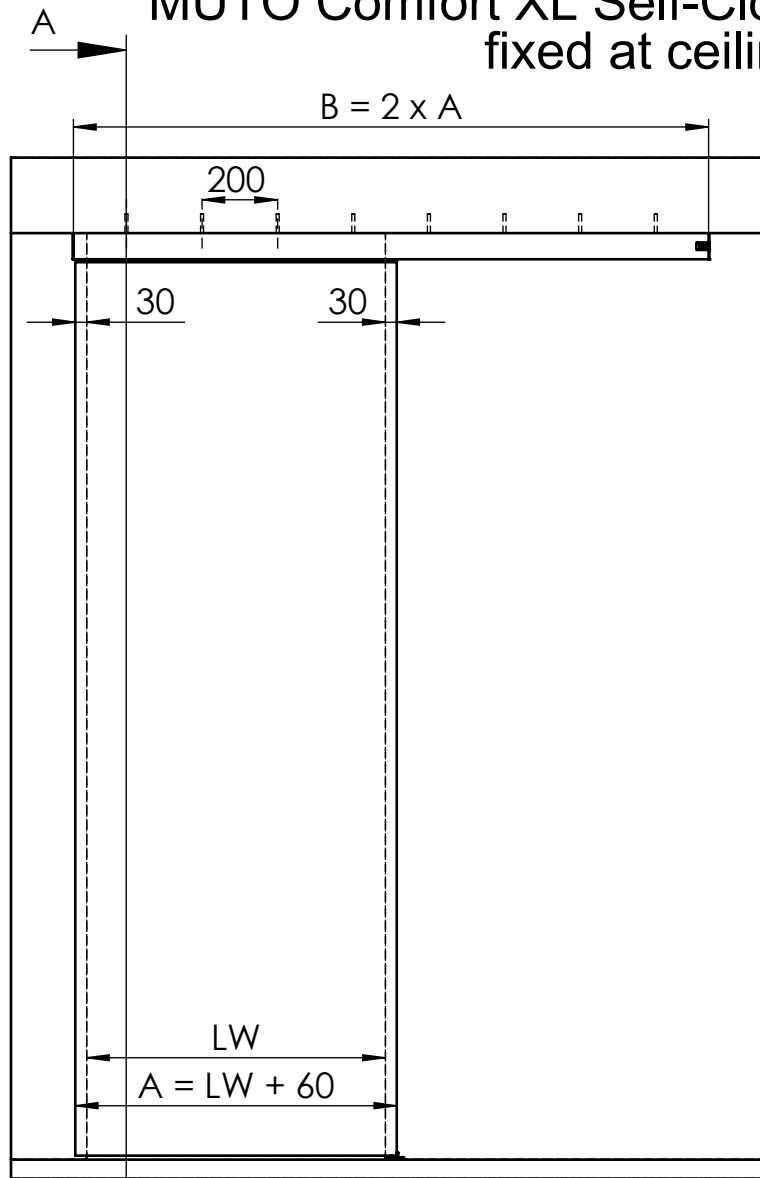
Detail X (1 : 2)

Detail Y (1 : 2)

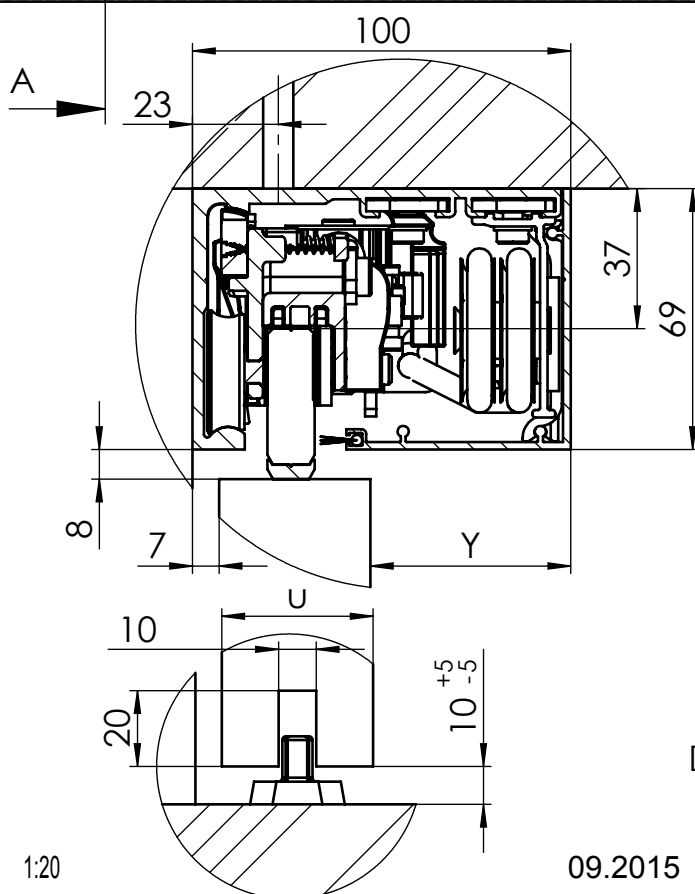
A	Flügelbreite
B	Laufschielenlänge
TH	Türhöhe
H	Gesamthöhe
LH	lichte Höhe
LW	lichte Weite
u	Holzdicke
Y	$100 - 7 - u$



# MUTO Comfort XL Self-Closing timber door fixed at ceiling



max. Door width:	1500mm
min. Door width:	850mm
max. Door height:	3000mm
max. Door weight :	120 kg
thickness of timber:	max. 50mm
DORMOTION subsequent	Ja
performed to DIN EN 1527	



Detail X (1 : 2)

Detail Y (1 : 2)

A	Glass width
B	length of track
GH	Glass height
H	total height
LH	clear opening height
LW	clear opening width
†	Glass thickness sliding door
Y	100 - 7 - u

